

DRIVEN BY ADVENTURE!

**BIG COUNTRY**  
**4x4**

# LANDCRUISER 200 SERIES PRODUCT CATALOGUE 2017





"Charging Buffalo" - Chobe National Park, Botswana







Drawer Systems..... pg 4

Roof racks..... pg 10

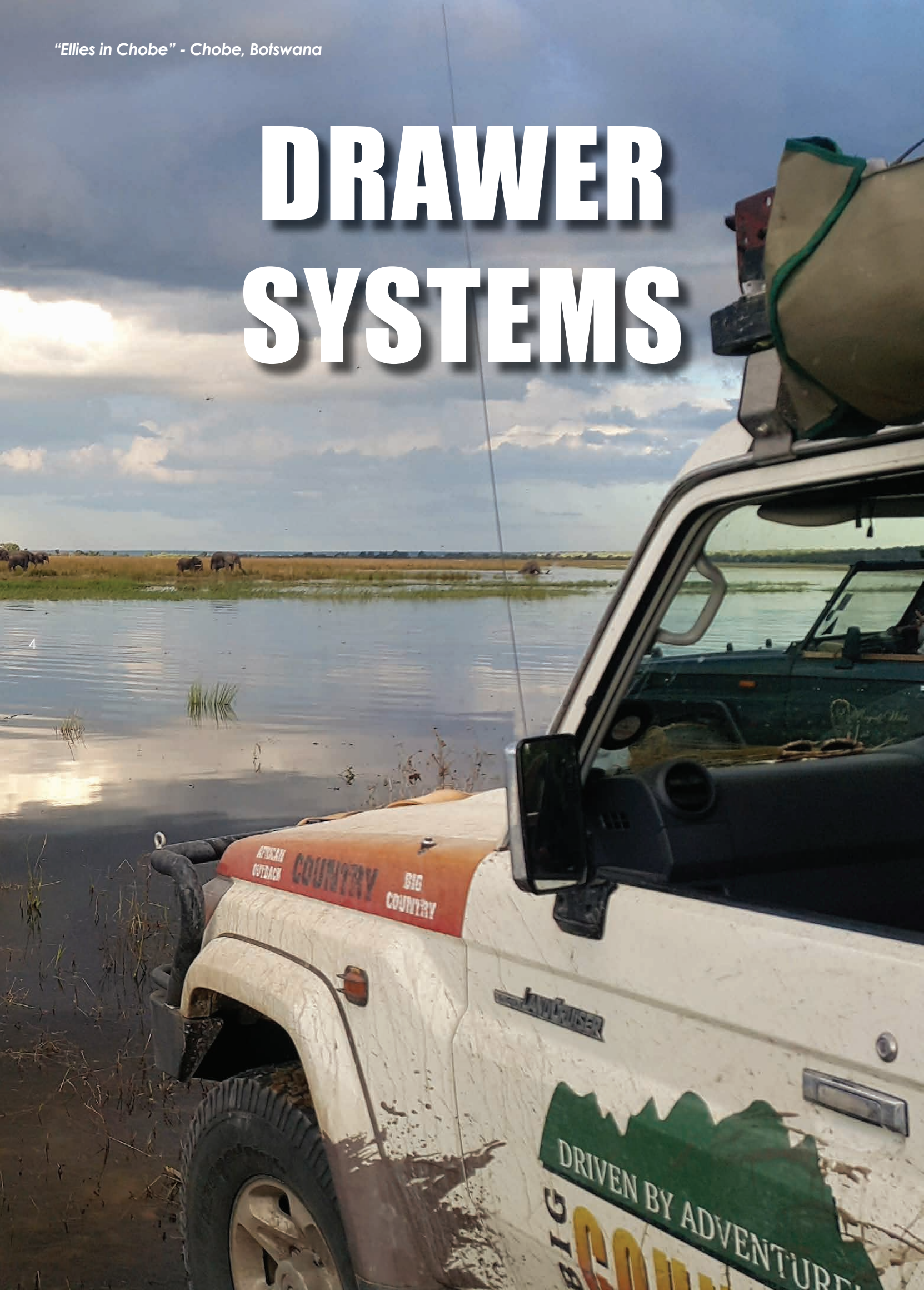




"Ellies in Chobe" - Chobe, Botswana

# DRAWER SYSTEMS

4







# Drawer Systems



**Big Country 4x4 manufactures two ranges of drawer systems**

## **ZAMBEZI**

*Best suited for LDV's*



**Reason:**

- LDV loadbay is generally longer than 1200mm - fully loaded drawers can get heavy
- LDV loadbay can be a dirty place not suited to telescopic sliders

The drawers run on heavy duty sealed roller bearings (30x10) capable of handling heavy loads.

Drawers are good for loads of 200kg per drawer.

Supplied with an integral pull-out sliding top ideal for mounting a fridge.

An easily available plastic "meat tray" works excellently.



LandCruiser 79  
Hilux  
Ford Ranger  
VW Amarok  
Defender 130  
Nissan  
Isuzu  
Triton  
Colt



## **SAVUTE**

*Best suited for SUV's*



**Reason:**

- Shorter loadbays, seldom longer than 1000mm
- Cleaner environment
- A neater finished off product is required

Drawers slide out their full length.

Most models supplied complete with trays and dividers for optimum packing efficiency.

Very easy to add a fridge slider and remove it between trips.

Loadbay still very useable between trips.



LandCruiser 76 SW  
Fortuner  
LandCruiser 80  
LandCruiser 100  
LandCruiser 200  
Prado 120  
Prado 150  
Disco 3 or 4  
FJ Cruiser  
Pajero CK LWB  
Defender 90/110  
Merc GWagon  
Nissan Patrol Y61  
Jeep Wrangler  
Suzuki Jimny





# LandCruiser 200VX

## SAVUTE

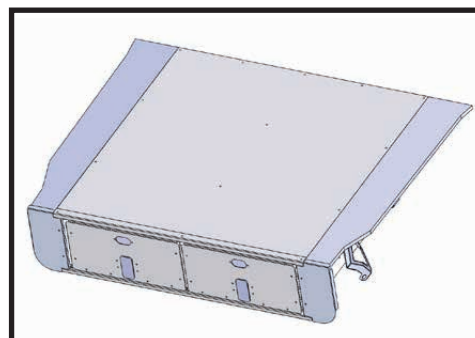
## Twin Drawer



6

### Features:

1. Designed for use in SUV's
2. Made to fit the vehicle loadbay perfectly.
3. Stainless steel heavy duty sliders for full drawer length travel.
4. Side panels removable to access additional wheelarch packing space.
5. No drilling—all mounting onto existing points.
6. Lockable.
7. Supplied standard with 2xDrawer trays, 2xDividers, 1xTip up work surface.



### Specifications:

Made from:	Lasercut Galvanised sheet steel
Top Surface:	12mm Superwood, Carpeted
Configuration:	Twin, equal, side by side
Finish:	Black powder-coated, carpeted
Sliders:	Telescopic st/steel HD bearing sliders
Carrying weight:	120kg per drawer

### Sizes:

Drawer pack width:	470mm
Drawer pack length:	1056mm
Drawer pack depth:	226mm
Overall height:	283mm
Tub width:	1025mm
Tub length:	1099mm

**Also see the combo drawer  
available for this model!**

### Packaging Size & Weight:

LxWxH:	110x103x29 cm
Weight:	75kg

**PART NO: A-SD-TD4**





# LandCruiser 200VX

## SAVUTE

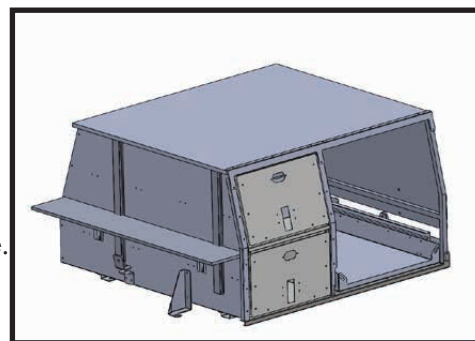
## Combo Drawer



7

### Features:

1. Designed to accommodate a 90ltr National Luna fridge
2. Ideal for the dedicated "overlander" build
3. Made to fit the vehicle loadbay perfectly.
4. Stainless steel heavy duty sliders for full drawer length travel.
5. Side panels removable to access additional wheelarch packing space.
6. No drilling—all mounting onto existing points.
7. Lockable.



### Specifications:

Made from:	Lasercut Galvanised sheet steel
Top Surface:	12mm Superwood, Carpeted
Configuration:	Twin, Double decker with top platform
Finish:	Black powder-coated, carpeted
Sliders:	Telescopic st/steel HD bearing sliders
Carrying weight:	120kg per drawer

### Sizes:

Drawer pack width:	392mm
Drawer pack length:	1050mm
Drawer pack depth:	248mm
Overall height:	617mm
Tub width:	1040mm
Tub length:	1100mm

**Also see the standard twin  
drawer available for this model!**

### Packaging Size & Weight:

LxWxH:	106 x 104 x 62 cm
Weight:	90kg

**ART NO: A-SD-200VX-DD90**



# LandCruiser 200GX

## SAVUTE

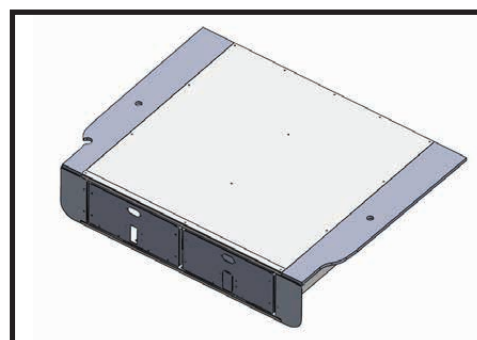
## Twin Drawer



8

### Features:

1. Designed for use in SUV's
2. Made to fit the vehicle loadbay perfectly.
3. Stainless steel heavy duty sliders for full drawer length travel.
4. Side panels removable to access additional wheelarch packing space.
5. No drilling—all mounting onto existing points.
6. Lockable.
7. Supplied standard with 2xDrawer trays, 2xDividers, 1xTip up work surface.
8. GX model has a different base/mounting arrangement.



### Specifications:

Made from:	Lasercut Galvanised sheet steel
Top Surface:	12mm Superwood, Carpeted
Configuration:	Twin, equal, side by side
Finish:	Black powder-coated, carpeted
Sliders:	Telescopic st/steel HD bearing sliders
Carrying weight:	120kg per drawer

### Sizes:

Drawer pack width:	470mm
Drawer pack length:	1056mm
Drawer pack depth:	226mm
Overall height:	283mm
Tub width:	1025mm
Tub length:	1099mm

**Also see the combo drawer  
available for this model!**

### Packaging Size & Weight:

LxWxH:	110x103x29 cm
Weight:	75kg

**PART NO: A-SD-TD4/1**





# LandCruiser 200GX

## SAVUTE

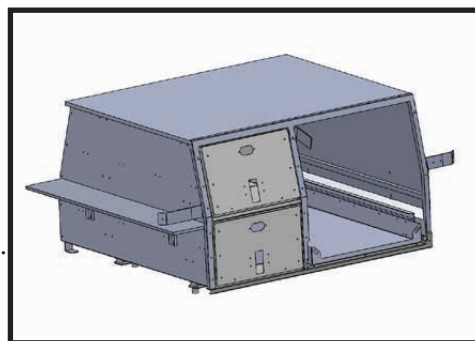
## Combo Drawer



9

### Features:

1. Designed to accommodate a 90ltr National Luna fridge
2. Ideal for the dedicated "overlander" build
3. Made to fit the vehicle loadbay perfectly.
4. Stainless steel heavy duty sliders for full drawer length travel.
5. Side panels removable to access additional wheelarch packing space.
6. No drilling—all mounting onto existing points.
7. Lockable.



### Specifications:

Made from: Lasercut Galvanised sheet steel  
Top Surface: 12mm Superwood, Carpeted  
Configuration: Twin, Double decker  
with top platform  
Finish: Black powder-coated, carpeted  
Sliders: Telescopic st/steel HD bearing  
sliders  
Carrying weight: 120kg per drawer

### Sizes:

Drawer pack width: 392mm  
Drawer pack length: 1050mm  
Drawer pack depth: 248mm  
Overall height: 617mm  
Tub width: 1040mm  
Tub length: 1100mm

**Also see the standard twin  
drawer available for this model!**

### Packaging Size & Weight:

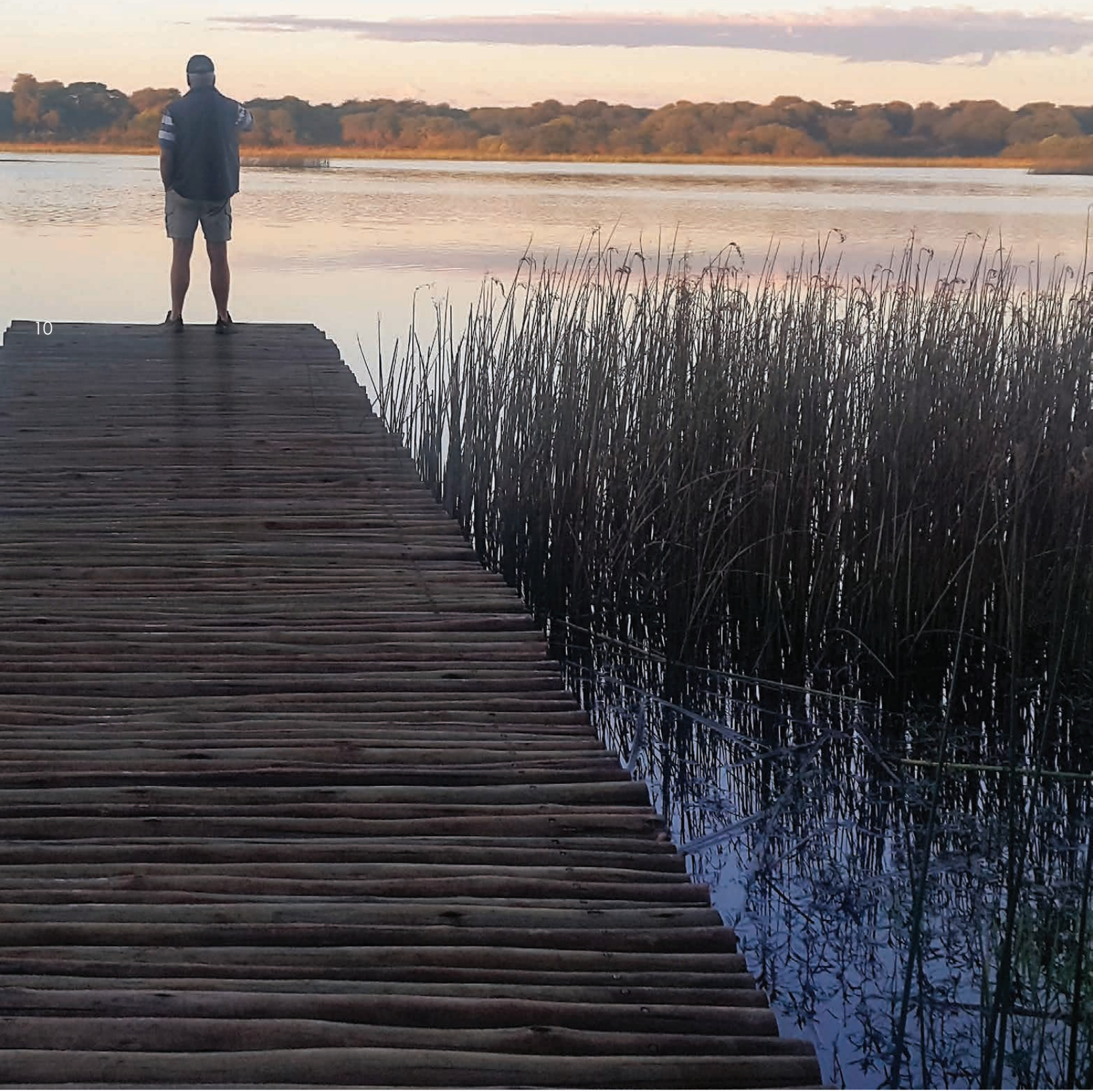
LxWxH: 106 x 104 x 62 cm  
Weight: 90kg

**ART NO: A-SD-200GX-DD90**



*"Drifters" - Maun, Botswana*

# ROOFRACKS







## Aluminium Roofracks

# Aluminium Roofracks

### WHAT MAKES BIG COUNTRY ROOF RACKS THE BEST?

- Longitudinal Floorplanks - **negligible wind noise**
- **Dove-tailed** cross members and **fully welded** for unrivalled strength - rated for 250kg
- **Flush** on top
- **M8 Nut slot** in all extrusions
- **Dual nut slots** in perimeter extrusion for sturdy fitment of accessories
- **Fully assembled** ready to fit
- Large range of **accessory brackets** available
- **Custom** sizes are possible

All roofracks can be supplied with an optional bolt-on top rail

pg 11



**Big Country DOES NOT use rivnuts to secure a roofrack to the roof of a vehicle.**







# Aluminium Roofracks

# LandCruiser 200

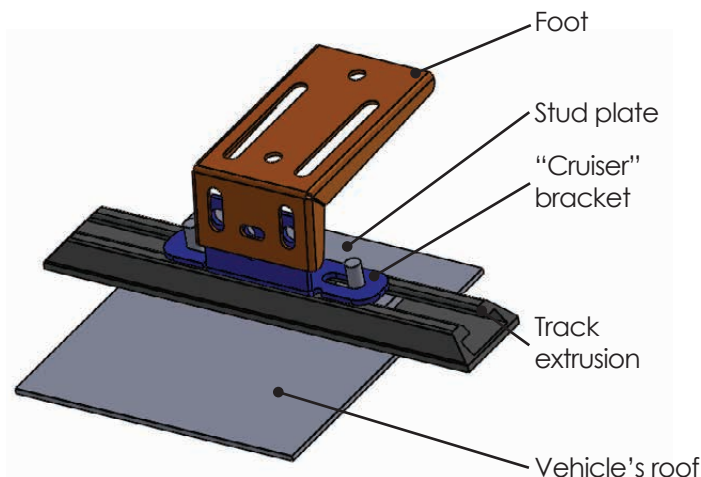
### Specifications:

Construction:	Fully Welded Aluminium—not just bolted together
Rated for (kg):	250kg, subject to vehicle load capability
Orientation:	Longitudinal Floorplanks
Configuration:	Assembled ready to fit
Mounting Type:	Track Mount to existing mounting holes
Finish:	Black Powder-coated

### Sizes:

	Full Rack	Half Rack
--	-----------	-----------

Length (mm):	2100	1700
Width (mm):	1300	1300
Toprail Options:	Full or half	Full
No. of feet/ side:	4	3



Typical Track Mount Layout



### Packaging Size & Weight:

	Full Rack	Half Rack
LxWxH:	215x130x6cm	170x130x6cm
Weight:	34kg	28kg

### PART NUMBERS:

Full Rack: A-RR-TLC2001

Half Rack: A-RR-TLC2002





## Aluminium Roofracks

# Loadbars

### Specifications:

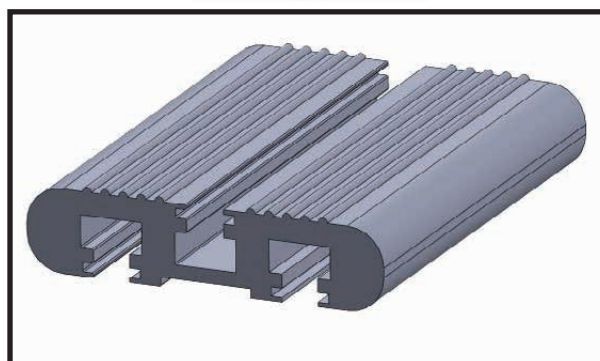
1. Heavy Duty Aluminium extrusion (2.4kg / meter, with section thicknesses of up to 12mm)
2. Aerodynamically shaped for minimal wind noise.
3. Fitted with rubber bolt slot inserts
4. Bolt slots suitable for standard M8 fasteners
5. A cheaper alternative to a full roofrack
6. Ideal for mounting a rooftop tent or Ostrich wing awning
7. Available for all vehicles in the Big Country roofrack range
8. Supplied in a polished finish with rubber end caps
9. Generally supplied in pairs

### Vehicle:

- Hilux Vigo 2005-2015
- LC76 S/wagon
- LC78 Troopy
- LC79
- LC100
- LC200
- LC80
- Prado120
- Prado150
- Fortuner
- FJ Cruiser
- Defender 110
- Defender 90
- Defender 130
- Discovery 3 or 4
- Patrol Y61
- G-Wagon
- Ranger (2004-2012)
- Ranger T6 (2012+)
- Amarok
- Pajero - CK
- Everest 2010
- D-Teq / DMax
- Hilux Revo 2016 +

### Part Numbers:

- LB-HV1250/T
- LB-CR76-2
- LB-CR79-2
- LB-CR79-2
- LB-CR100-2
- LB-CR200-2
- LB-CR80-2
- LB-PR120-2
- LB-PR150-2
- LB-FORT-2
- LB-FJC-2
- LB-DEF-2
- LB-DEF-2
- LB-DEF-2
- LB-DISC3
- LB-NPAT-2
- LB-MG-2
- LB-FMT
- LB-HV1250/B
- LB-VWAMA
- LB-PCKL-2
- LB-FRDEV-2
- LB-IDMAX
- LB-HR1250/T















### **Disclaimer:**

All rights reserved. © 2017. Big Country 4x4 consultants, its sponsors, contributors and advertisers disclaim all liability for any loss, damage, injury or expense that might arise from the use of, or reliance upon, the services or intellectual property contained herein.

Please note that the information in this catalogue is subject to change without prior notice and Big Country 4x4 consultants, its sponsors and contributors cannot be held liable for these changes.

### **Contact Us:**

#### **Physical Address:**

358 Politician Avenue  
Northlands Business Park  
37 New Market Street  
Northriding

#### **GPS:**

S26 01,939; E027 57,494

#### **Phone:**

+2711 795 9700

#### **Email:**

admin@bigcountry.co.za

16







WWW.HHCCOUNTRY.CO.ZA

HHCCOUNTRY 4x4

LAND CRUISER

Pretoria Honda Toyota