

DRIVEN BY ADVENTURE!

BIG COUNTRY
4x4

LANDCRUISER 200 SERIES

PRODUCT CATALOGUE 3rd Ed.



"Male Lion" - Botswana



Drawer Systems.....	pg 4
Roof racks.....	pg 12



DRAWER SYSTEMS



Big Country 4x4 manufactures two ranges of drawer systems

ZAMBEZI

Best suited for LDV's



Reason:

- LDV loadbay is generally longer than 1200mm - fully loaded drawers can get heavy
- LDV loadbay can be a dirty place not suited to telescopic sliders

The drawers run on heavy duty sealed roller bearings (30x10) capable of handling heavy loads.

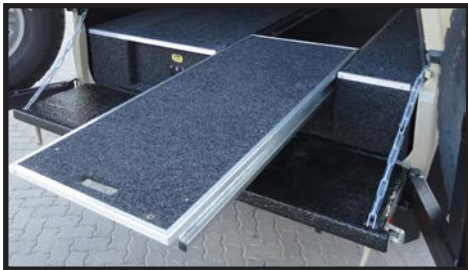
Drawers are good for loads of 200kg per drawer.

Supplied with an integral pull-out sliding top ideal for mounting a fridge.

An easily available plastic "meat tray" works excellently.



LandCruiser 79
Hilux
Ford Ranger
VW Amarok
Defender 130
Nissan
Isuzu
Triton
Colt



Drawer Systems

SAVUTE

Best suited for SUV's



Reason:

- Shorter loadbays, seldom longer than 1000mm
- Cleaner environment
- A neater finished off product is required

Drawers slide out their full length with telescopic slide

Most models supplied complete with trays and dividers for optimum packing efficiency.

Very easy to add a fridge slider and remove it between trips.

Loadbay still very useable between trips.



LandCruiser 76 SW
Fortuner
LandCruiser 80
LandCruiser 100
LandCruiser 200
Prado120
Prado150
Disco 3 or 4
FJ Cruiser
Pajero CK LWB
Defender 90/110
Merc GWagon
Nissan Patrol
Jeep Wrangler
Suzuki Jimny





LandCruiser 200VX

SAVUTE

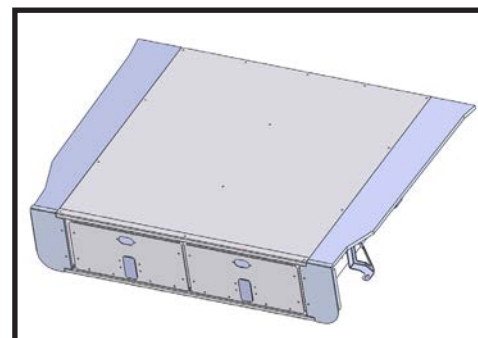
Twin Drawer



6

Features:

1. Designed for use in SUV's
2. Made to fit the vehicle loadbay perfectly.
3. Stainless steel heavy duty sliders for full drawer length travel.
4. Side panels removable to access additional wheelarch packing space.
5. No drilling—all mounting onto existing points.
6. Lockable.
7. Supplied standard with 2xDrawer trays, 2xDividers, 1xTip up work surface.



Specifications:

Made from:	Lasercut Galvanised sheet steel
Top Surface:	12mm Superwood, Carpeted
Configuration:	Twin, equal, side by side
Finish:	Black powder-coated, carpeted
Sliders:	Telescopic st/steel HD bearing sliders
Carrying weight:	120kg per drawer

Sizes:

Drawer pack width:	470mm
Drawer pack length:	1056mm
Drawer pack depth:	226mm
Overall height:	283mm
Tub width:	1025mm
Tub length:	1099mm

*Also see the combo drawer
available for this model!*

Packaging Size & Weight:

LxWxH:	110x103x29 cm
Weight:	75kg

PART NO: A-SD-TD4



LandCruiser 200VX+FSP

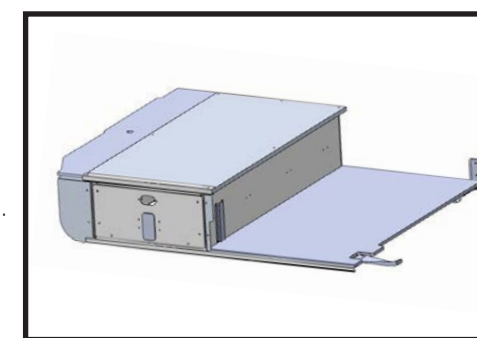
Twin Drawer



7

Features:

1. Designed for use in SUV's
2. Made to fit the vehicle loadbay perfectly.
3. Stainless steel heavy duty sliders for full drawer length travel.
4. Side panel on LHS is removable for additional wheelarch packing space.
5. No drilling—all mounting onto existing points.
6. Lockable.
7. Carpeted wooden platform sized to suit an 80ltr fridge slider
8. Dividers and drawer trays excluded



Specifications:

Made from:	Lasercut Galvanised sheet steel
Top Surface:	12mm Superwood, Carpeted
Configuration:	Single, LHS
Finish:	Black powder-coated, carpeted
Sliders:	Telescopic st/steel HD bearing sliders
Carrying weight:	120kg per drawer

Sizes:

Drawer pack width:	403mm
Drawer pack length:	1057mm
Drawer pack depth:	222mm
Overall height:	283mm
Tub width:	445mm
Tub length:	1097mm

*Also see the combo drawer
available for this model!*

Packaging Size & Weight:

LxWxH:	110x102x30 cm
Weight:	50kg

PART NO: A-SD-SD12-FSP



LandCruiser 200VX

SAVUTE

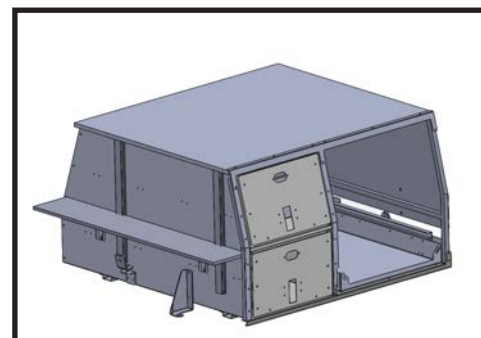
Combo Drawer



8

Features:

1. Designed to accommodate a 90ltr National Luna fridge
2. Ideal for the dedicated "overlander" build
3. Made to fit the vehicle loadbay perfectly.
4. Stainless steel heavy duty sliders for full drawer length travel.
5. Side panels removable to access additional wheelarch packing space.
6. No drilling—all mounting onto existing points.
7. Lockable.



Specifications:

Made from: Lasercut Galvanised sheet steel
Top Surface: 12mm Superwood, Carpeted
Configuration: Twin, Double decker with top platform
Finish: Black powder-coated, carpeted
Sliders: Telescopic st/steel HD bearing sliders
Carrying weight: 120kg per drawer

Sizes:

Drawer pack width: 392mm
Drawer pack length: 1050mm
Drawer pack depth: 248mm
Overall height: 617mm
Tub width: 1040mm
Tub length: 1100mm

Also see the standard twin drawer available for this model!

Packaging Size & Weight:

LxWxH: 110 x 115 x 62 cm
Weight: 100kg

PART NO: A-SD-200VX-DD90



LandCruiser 200GX

SAVUTE

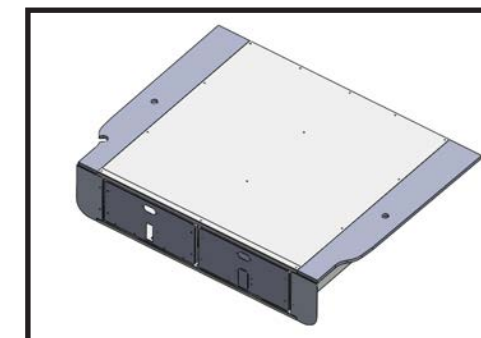
Twin Drawer



9

Features:

1. Designed for use in SUV's
2. Made to fit the vehicle loadbay perfectly.
3. Stainless steel heavy duty sliders for full drawer length travel.
4. Side panels removable to access additional wheelarch packing space.
5. No drilling—all mounting onto existing points.
6. Lockable.
7. Supplied standard with 2xDrawer trays, 2xDividers, 1xTip up work surface.
8. GX model has a different base/mounting arrangement.



Specifications:

Made from: Lasercut Galvanised sheet steel
Top Surface: 12mm Superwood, Carpeted
Configuration: Twin, equal, side by side
Finish: Black powder-coated, carpeted
Sliders: Telescopic st/steel HD bearing sliders
Carrying weight: 120kg per drawer

Sizes:

Drawer pack width: 470mm
Drawer pack length: 1056mm
Drawer pack depth: 226mm
Overall height: 283mm
Tub width: 1025mm
Tub length: 1099mm

Also see the combo drawer available for this model!

Packaging Size & Weight:

LxWxH: 110x103x29 cm
Weight: 75kg

PART NO: A-SD-TD4/1



LandCruiser 200GX+FSP

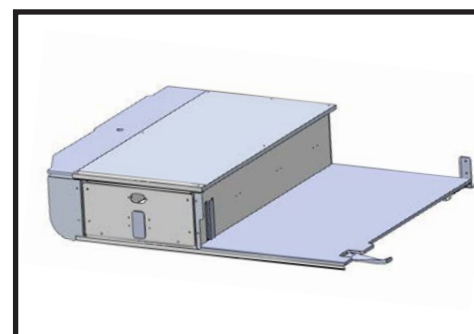
Twin Drawer



10

Features:

1. Designed for use in SUV's
2. Made to fit the vehicle loadbay perfectly.
3. Stainless steel heavy duty sliders for full drawer length travel.
4. Side panel on LHS is removable for additional wheelarch packing space.
5. No drilling—all mounting onto existing points.
6. Lockable.
7. Carpeted wooden platform sized to suit an 80ltr fridge slider
8. Dividers and drawer trays excluded



Specifications:

Made from:	Lasercut Galvanised sheet steel
Top Surface:	12mm Superwood, Carpeted
Configuration:	Single, LHS
Finish:	Black powder-coated, carpeted
Sliders:	Telescopic st/steel HD bearing sliders
Carrying weight:	120kg per drawer

Sizes:

Drawer pack width:	394mm
Drawer pack length:	1057mm
Drawer pack depth:	222mm
Overall height:	283mm
Tub width:	445mm
Tub length:	1099mm

Also see the combo drawer available for this model!

Packaging Size & Weight:

LxWxH:	110x102x30 cm
Weight:	50kg

PART NO: A-SD-SD12G+FSP



LandCruiser 200GX

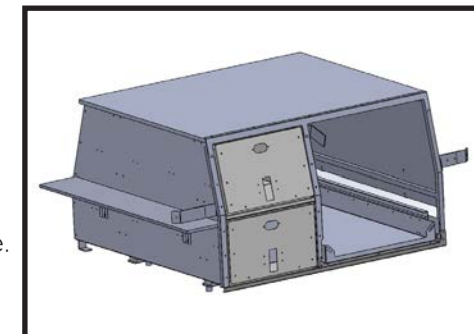
SAVUTE Combo Drawer



11

Features:

1. Designed to accommodate a 90ltr National Luna fridge
2. Ideal for the dedicated "overlander" build
3. Made to fit the vehicle loadbay perfectly.
4. Stainless steel heavy duty sliders for full drawer length travel.
5. Side panels removable to access additional wheelarch packing space.
6. No drilling—all mounting onto existing points.
7. Lockable.



Specifications:

Made from:	Lasercut Galvanised sheet steel
Top Surface:	12mm Superwood, Carpeted
Configuration:	Twin, Double decker with top platform
Finish:	Black powder-coated, carpeted
Sliders:	Telescopic st/steel HD bearing sliders
Carrying weight:	120kg per drawer

Sizes:

Drawer pack width:	392mm
Drawer pack length:	1050mm
Drawer pack depth:	248mm
Overall height:	617mm
Tub width:	1040mm
Tub length:	1100mm

Also see the standard twin drawer available for this model!

Packaging Size & Weight:

LxWxH:	106 x 104 x 62 cm
Weight:	100kg

PART NO: A-SD-200GX-DD90

ROOFRACKS



Aluminium Roofracks

Aluminium Roofracks

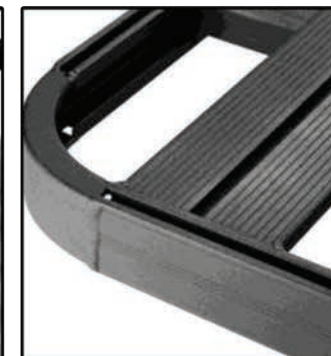
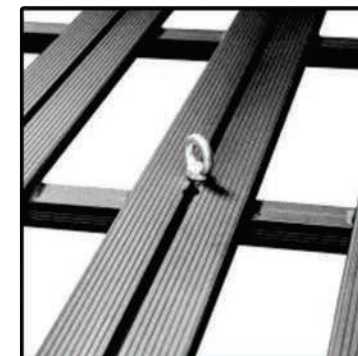
WHAT MAKES BIG COUNTRY ROOF RACKS THE BEST?

- Longitudinal Floorplanks - negligible wind noise
- Dove-tailed cross members and fully welded for unrivalled strength - rated for 250kg
- Flush on top
- M8 Nut slot in all extrusions
- Dual nut slots in perimeter extrusion for sturdy fitment of accessories
- Fully assembled ready to fit
- Large range of accessory brackets available
- Custom sizes are possible

All roofracks can be supplied with an optional bolt-on top rail



Big Country DOES NOT use rivnuts to secure a roofrack to the roof of a vehicle.





Aluminium
Roofracks

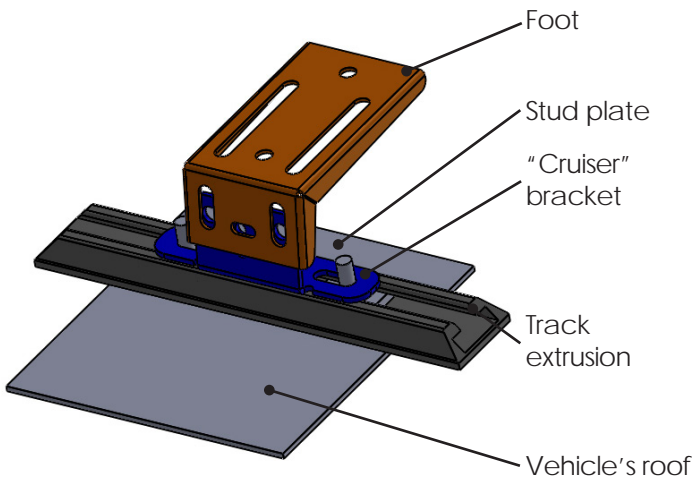
Specifications:

Construction:	Fully Welded Aluminium—not just bolted together
Rated for (kg):	250kg, subject to vehicle load capability
Orientation:	Longitudinal Floorplanks
Configuration:	Assembled ready to fit
Mounting Type:	Track Mount to existing mounting holes
Finish:	Black Powder-coated

Sizes:

	Full Rack	Half Rack
Length (mm):	2100	1700
Width (mm):	1300	1300
Toprail Options:	Full or half	Full
No. of feet/ side:	4	3

LandCruiser
200



Typical Track Mount Layout



Packaging Size & Weight:

	Full Rack	Half Rack
LxWxH:	215x130x6cm	170x130x6cm
Weight:	34kg	28kg

PART NUMBERS:

Full Rack:	A-RR-TLC2001
Half Rack:	A-RR-TLC2002



Aluminium
Roofracks

Specifications:

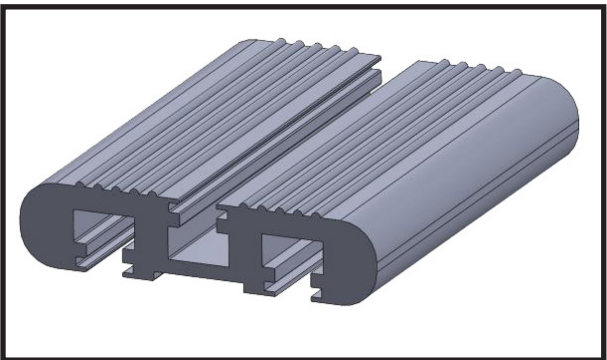
1. Heavy Duty Aluminium extrusion (2.4kg / meter, with section thicknesses of up to 12mm)
2. Aerodynamically shaped for minimal wind noise.
3. Fitted with rubber bolt slot inserts
4. Bolt slots suitable for standard M8 fasteners
5. A cheaper alternative to a full roofrack
6. Ideal for mounting a rooftop tent or Ostrich wing awning
7. Available for all vehicles in the Big Country roofrack range
8. Supplied in a polished finish with rubber end caps
9. Generally supplied in pairs

Vehicle:

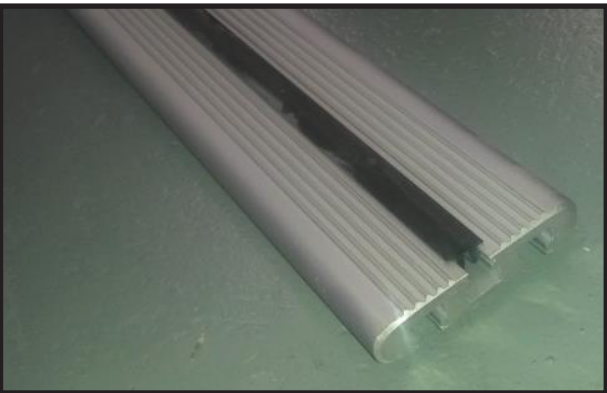
- LC200

Part Numbers:

LB-CR200-2



15



"The Raft Floating Restaurant" - Chobe, Botswana





Disclaimer:

All rights reserved. © 2017. Big Country 4x4 consultants, its sponsors, contributors and advertisers disclaim all liability for any loss, damage, injury or expense that might arise from the use of, or reliance upon, the services or intellectual property contained herein.

Please note that the information in this catalogue is subject to change without prior notice and Big Country 4x4 consultants, its sponsors and contributors cannot be held liable for these changes.

Contact Us:

Physical Address:

358 Politician Avenue
Northlands Business Park
37 New Market Street
Northriding

GPS:

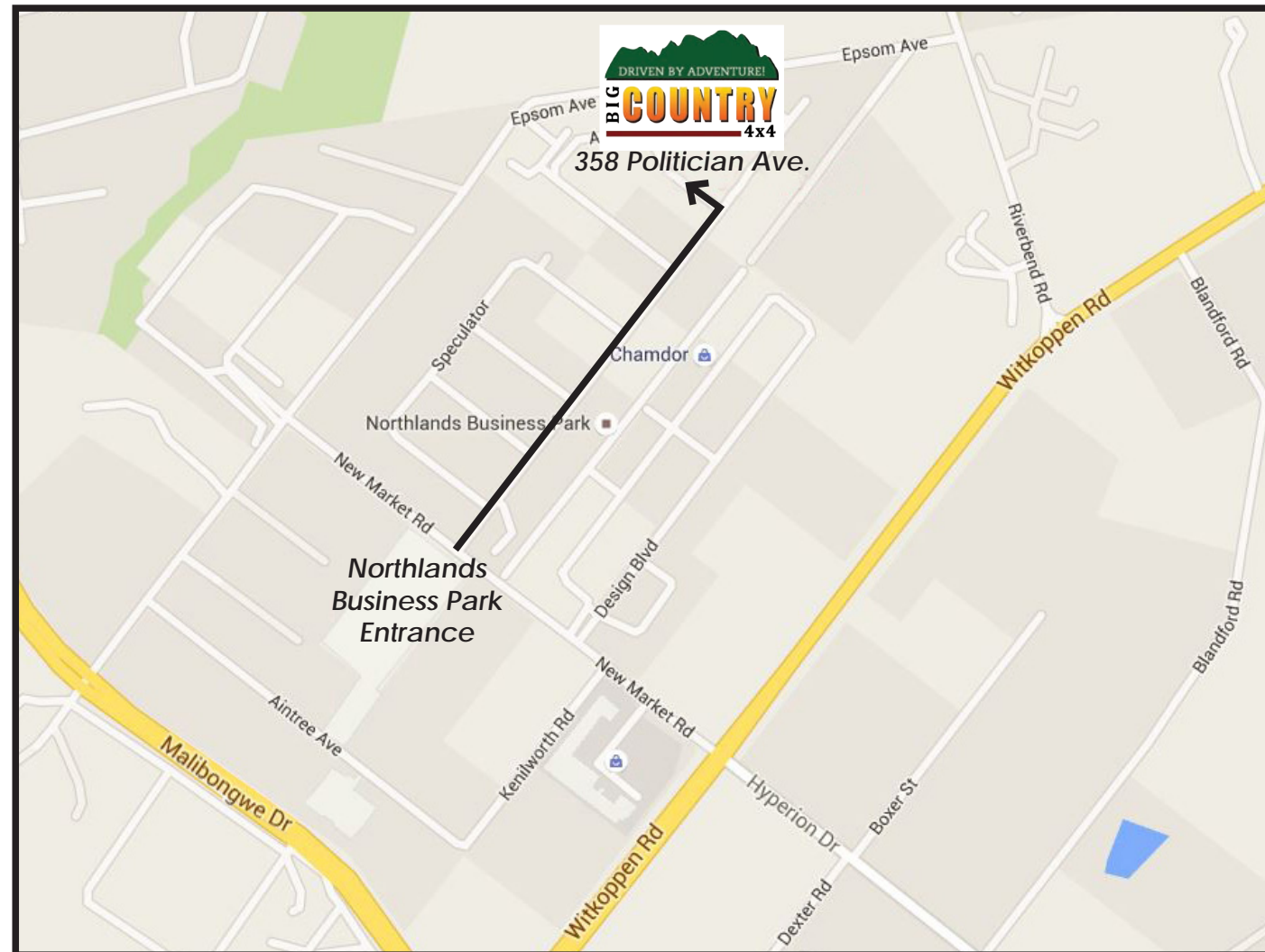
S26 01,939; E027 57,494

Phone:

+2711 795 9700

Email:

admin@bigcountry.co.za



"A Black Heron Fishing" - Botswana



