



# LANDCRUISER 70 SERIES

## PRODUCT CATALOGUE 3<sup>rd</sup> Ed.





"Male Lion" - Botswana



Drawer Systems.....	pg 4
Roof racks.....	pg 14
Canopies.....	pg 20
Vehicle Specific.....	pg 24





# DRAWER SYSTEMS



Big Country 4x4 manufactures two ranges of drawer systems

## ZAMBEZI

Best suited for LDV's



Reason:

- LDV loadbay is generally longer than 1200mm - fully loaded drawers can get heavy
- LDV loadbay can be a dirty place not suited to telescopic sliders

The drawers run on heavy duty sealed roller bearings (30x10) capable of handling heavy loads.

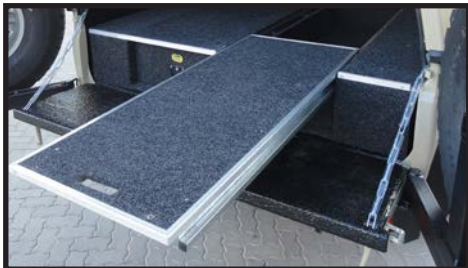
Drawers are good for loads of 200kg per drawer.

Supplied with an integral pull-out sliding top ideal for mounting a fridge.

An easily available plastic "meat tray" works excellently.



LandCruiser 79  
Hilux  
Ford Ranger  
VW Amarok  
Defender 130  
Nissan  
Isuzu  
Triton  
Colt



# Drawer Systems

## SAVUTE

Best suited for SUV's



Reason:

- Shorter loadbays, seldom longer than 1000mm
- Cleaner environment
- A neater finished off product is required

Drawers slide out their full length with telescopic slide

Most models supplied complete with trays and dividers for optimum packing efficiency.

Very easy to add a fridge slider and remove it between trips.

Loadbay still very useable between trips.



LandCruiser 76 SW  
Fortuner  
LandCruiser 80  
LandCruiser 100  
LandCruiser 200  
Prado120  
Prado150  
Disco 3 or 4  
FJ Cruiser  
Pajero CK LWB  
Defender 90/110  
Merc GWagon  
Nissan Patrol  
Jeep Wrangler  
Suzuki Jimny







# LandCruiser 76 S Wagon

SAVUTE

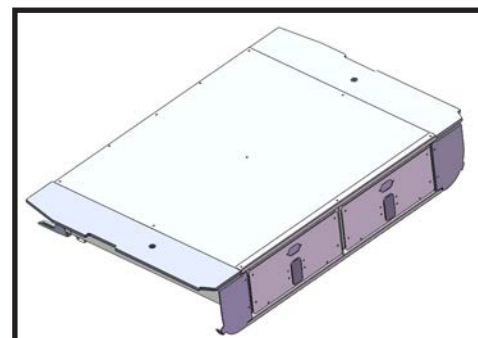
Twin Drawer



6

## Features:

1. Designed for use in SUV's
2. Made to fit the vehicle loadbay perfectly.
3. Stainless steel heavy duty sliders for full drawer length travel.
4. Side panels removable to access additional wheelarch packing space.
5. No drilling—all mounting onto existing points.
6. Lockable.
7. Supplied standard with 2xDrawer trays, 2xDividers, 1xTip up work surface.



## Specifications:

Made from: Lasercut Galvanised sheet steel  
Top Surface: 12mm Superwood, Carpeted  
Configuration: Twin, equal, side by side  
Finish: Black powder-coated, carpeted  
Sliders: Telescopic st/steel HD bearing sliders  
Carrying weight: 120kg per drawer

## Sizes:

Drawer pack width: 463mm  
Drawer pack length: 947mm  
Drawer pack depth: 200mm  
Overall height: 257mm  
Tub width: 1010mm  
Tub length: 966mm

*Also see the combo drawer  
available for this model!*

## Packaging Size & Weight:

LxWxH: 98x102x26 cm  
Weight: 75kg

**PART NO: A-SD-TD11**



# LandCruiser 76 S Wagon

SAVUTE

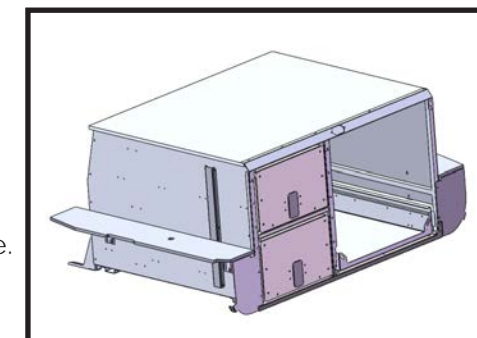
Combo Drawer



7

## Features:

1. Designed to accommodate a 80ltr National Luna fridge
2. Ideal for the dedicated "overlander" build
3. Made to fit the vehicle loadbay perfectly.
4. Stainless steel heavy duty sliders for full drawer length travel.
5. Side panels removable to access additional wheelarch packing space.
6. No drilling—all mounting onto existing points.
7. Lockable.



## Specifications:

Made from: Lasercut Galvanised sheet steel  
Top Surface: 12mm Superwood, Carpeted  
Configuration: Twin, Double decker with top platform  
Finish: Black powder-coated, carpeted  
Sliders: Telescopic st/steel HD bearing sliders  
Carrying weight: 120kg per drawer

## Sizes:

Drawer pack width: 365mm  
Drawer pack length: 915mm  
Drawer pack depth: 244mm  
Overall height: 613mm  
Tub width: 1025mm  
Tub length: 930mm

*Also see the standard twin  
drawer available for this model!*

## Packaging Size & Weight:

LxWxH: 93 x 103 x 62 cm  
Weight: 100kg

**PART NO: A-SD-LC76-DD80**





# LandCruiser 76+FSP

SAVUTE

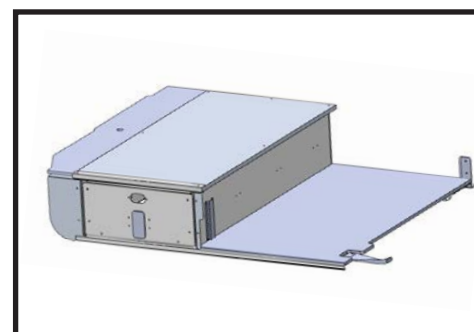
Twin Drawer



8

## Features:

1. Designed for use in SUV's
2. Made to fit the vehicle loadbay perfectly.
3. Stainless steel heavy duty sliders for full drawer length travel.
4. Side panel on LHS is removable for additional wheelarch packing space.
5. No drilling—all mounting onto existing points.
6. Lockable.
7. Carpeted wooden platform sized to suit an 80ltr fridge slider
8. Dividers and drawer trays excluded



## Specifications:

Made from:	Lasercut Galvanised sheet steel
Top Surface:	12mm Superwood, Carpeted
Configuration:	Single, LHS
Finish:	Black powder-coated, carpeted
Sliders:	Telescopic st/steel HD bearing sliders
Carrying weight:	120kg per drawer

## Sizes:

Drawer pack width:	382mm
Drawer pack length:	947mm
Drawer pack depth:	200mm
Overall height:	258mm
Tub width:	424mm
Tub length:	965mm

*Also see the combo drawer  
available for this model!*

## Packaging Size & Weight:

LxWxH:	97 x 106 x 26 cm
Weight:	45kg

**PART NO: A-SD-SD4+FSP**

# ZAMBEZI DRAWER SYSTEMS







ZAMBEZI

# LandCruiser 79 PickUp Twin Drawer

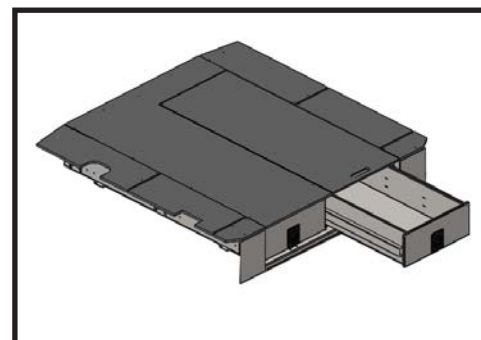


10

*Design is based on the size of the OEM Double Cab length.*

## Features:

1. Designed for use in LDV's
2. Made to fit the vehicle loadbay perfectly.
3. Roller Bearings provide an extremely rugged design
4. Side panels removable to access additional wheelarch packing space.
5. Integral top sliding surface—ideal for mounting a fridge
6. Lockable.
7. Dividers and plastic trays are available.
8. Available with for Double or Extra Cab



## Specifications:

Made from: Lasercut Galvanised sheet steel  
Top Surface: 12mm Superwood, Carpeted  
Configuration: Twin, equal, side by side  
Finish: Carpeted  
Sliders: Roller bearings  
Carrying weight: 200kg per drawer

## Sizes:

Drawer pack width: 435mm  
Drawer pack length: 1430mm  
Drawer pack depth: 220mm  
Overall height: 265mm  
Tub width: 1000mm  
Tub length: 1500mm

## PART NUMBERS:

Double Cab: RD-CR1A007

Bed Ext for S/Cab: CR 10033

## Packaging Size & Weight:

LxWxH: 150x101x28 cm  
Weight: 85kg



ZAMBEZI

# LandCruiser 78 Troopy Twin Drawer



11

## Features:

1. Designed for use in LDV's
2. Made to fit the vehicle loadbay perfectly.
3. Roller Bearings provide an extremely rugged design
4. Side panels removable to access additional wheelarch packing space.
5. Integral top sliding surface—ideal for mounting a fridge
6. Lockable.
7. Dividers and plastic trays are available.
8. Available with for Double or Extra Cab
9. "Bed extensions" available for Single Cab and Extra Cab vehicles

## Specifications:

Made from:	Lasercut Galvanised sheet steel
Top Surface:	12mm Superwood, Carpeted
Configuration:	Twin, equal, side by side
Finish:	Carpeted
Sliders:	Roller bearings
Carrying weight:	200kg per drawer

PART NO: RD/HXDA003



# Commercial Drawers

## Description:

Commercial drawers are supplied without the integral fridge slider and without the side panels. They can either be finished off with a carpeted wood top or supplied with an aluminium chequer plate top and face panels.

All these drawers have an overall height of 265mm

## Commercial Drawer Sizes:

1300 x 1000, carpeted top	RD/COMA002
1301 x 1000, Aluminium chequer plate top	RD/COMA002A
1500 x 1000, carpeted top	RD/COMA005
1500 x 1000, Aluminium chequer plate top	RD/COMA005A
1700 x 1000, carpeted top	RD/COMA004
1700 x 1000, Aluminium chequer plate top	RD/COMA004A
2000 x 1000, carpeted top	RD/COMA003
2000 x 1000, , Aluminium chequer plate top	RD/COMA003A

## Part Number:

12



## Features:

1. Designed for use in LDV's
2. Made to fit between the vehicle wheelarches
3. Roller Bearings provide an extremely rugged design
4. No side panels – these drawers are open down the sides
5. Solid top surface – no slider included
6. Lockable.

## Specifications:

Made from:	Lasercut Galvanised sheet steel
Top Surface:	12mm Superwood, Carpeted
Configuration:	Twin, equal, side by side
Finish:	Carpeted or Aluminium Chequer plate
Sliders:	Roller bearings
Carrying weight:	200kg per drawer





# ROOFRACKS



## Aluminium Roofracks

# Aluminium Roofracks

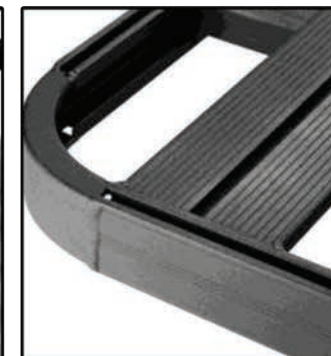
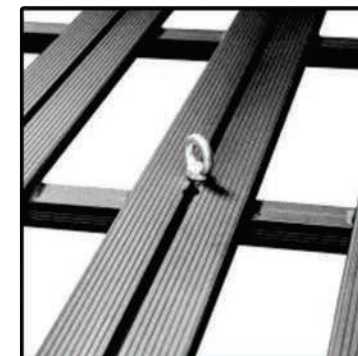
### WHAT MAKES BIG COUNTRY ROOF RACKS THE BEST?

- Longitudinal Floorplanks - **negligible wind noise**
- **Dove-tailed** cross members and **fully welded** for unrivalled strength - rated for 250kg
- **Flush** on top
- **M8 Nut slot** in all extrusions
- **Dual nut slots** in perimeter extrusion for sturdy fitment of accessories
- **Fully assembled** ready to fit
- Large range of **accessory brackets** available
- **Custom** sizes are possible

All roofracks can be supplied with an optional bolt-on toprail



*Big Country **DOES NOT** use rivnuts to secure a roofrack to the roof of a vehicle.*







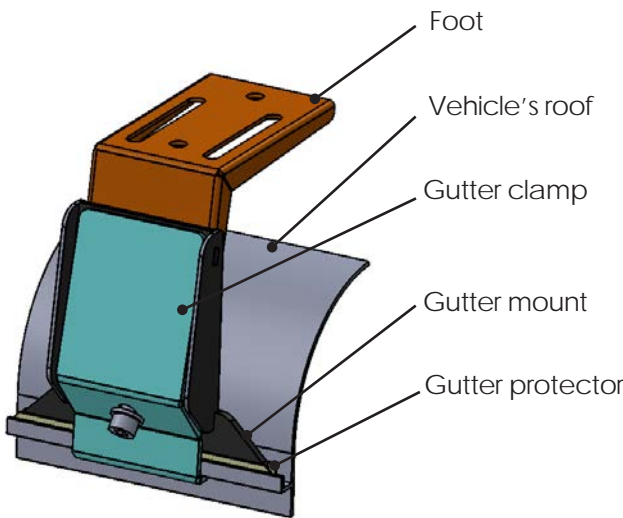
# Aluminium Roof racks

**Specifications:**

Construction: Fully Welded Aluminium—not just bolted together  
Rated for (kg): 250kg, subject to vehicle load capability  
Orientation: Longitudinal Floorplanks  
Configuration : Assembled ready to fit  
Mounting Type: Gutter Mount  
Finish: Black Powder-coated  
Number of feet: 4 x height adjustable steel feet per side

**Sizes:**

Length : 2400mm  
Width: 1420mm  
16 Toprail Options: Full or Half



Typical Gutter Mount Layout



**Packaging Size & Weight:**

LxWxH: 240x142x6cm  
Weight: 35kg

PART NO: A-RR-TLC-761



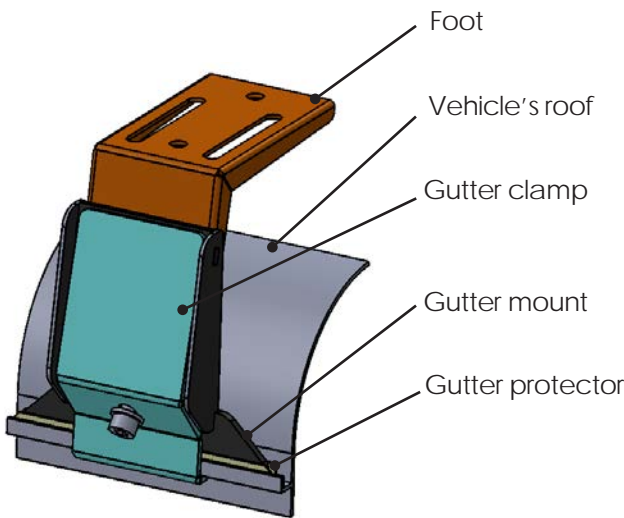
# Aluminium Roof racks

**Specifications:**

Construction: Fully Welded Aluminium - not just bolted together  
Rated for (kg): 250kg, subject to vehicle load capability  
Orientation: Longitudinal Floorplanks  
Configuration: Assembled ready to fit  
Mounting Type: Gutter Mount to existing mounting holes  
Finish: Black Powder-coated  
Feet: Height adjustable steel feet

**Sizes:**

	Option 1	Option 2
Length (mm):	2800	2000
Width (mm):	1420	1420
Toprail Options:	Full or half	Full or half
No. of feet/ side:	4	3



Typical Gutter Mount Layout



**Packaging Size & Weight:**

	Option 1	Option 2
LxWxH:	280x142x6cm	200x142x6cm
Weight:	42kg	35kg

**PART NUMBERS:**

Option 1: A-RR-TLC-781  
Option 2: A-RR-TLC-782





# Aluminium Roofracks

**Specifications:**

Construction:	Fully Welded Aluminium - not just bolted together
Rated for (kg):	250kg, subject to vehicle load capability
Orientation:	Longitudinal Floorplanks
Configuration:	Assembled ready to fit
Mounting Type:	Gutter Mount to existing mounting holes
Finish:	Black Powder-coated

**Sizes:**

Double Cab      Single Cab

Length (mm):	1600	800
Width (mm):	1420	1420
Toprail Options:	Full or half	Full
No. of feet/ side:	3	2

18



**Packaging Size & Weight:**

Double Cab      Single Cab

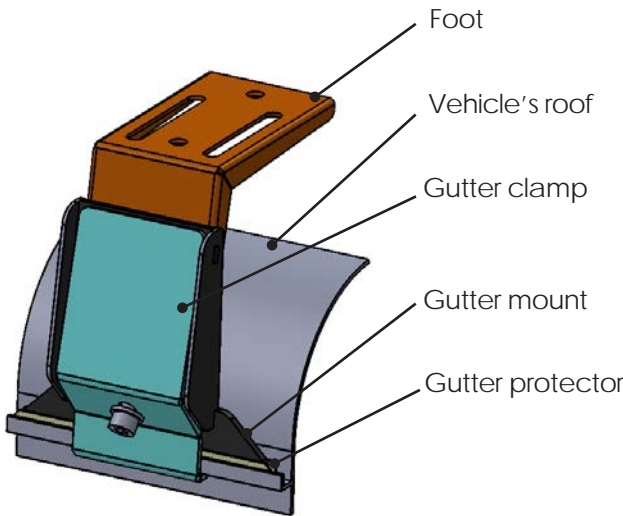
LxWxH:	161x145x6cm	81x145x6cm
Weight:	25kg	20kg

PART NUMBERS:

Double Cab:    A-RR-TLC-79DC

Single Cab:     A-RR-TLC-79SC

# LandCruiser 79



Typical Gutter Mount Layout



# Aluminium Roofracks

**Specifications:**

1. Heavy Duty Aluminium extrusion (2.4kg / meter, with section thicknesses of up to 12mm)
2. Aerodynamically shaped for minimal wind noise.
3. Fitted with rubber bolt slot inserts
4. Bolt slots suitable for standard M8 fasteners
5. A cheaper alternative to a full roofrack
6. Ideal for mounting a rooftop tent or Ostrich wing awning
7. Available for all vehicles in the Big Country roofrack range
8. Supplied in a polished finish with rubber end caps
9. Generally supplied in pairs

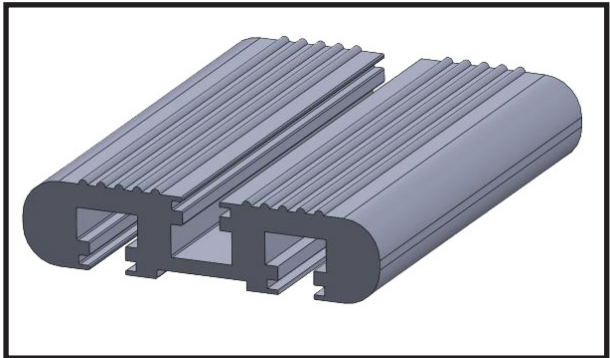
**Vehicle:**

- LC76 S/wagon
- LC78 Troopy
- LC79

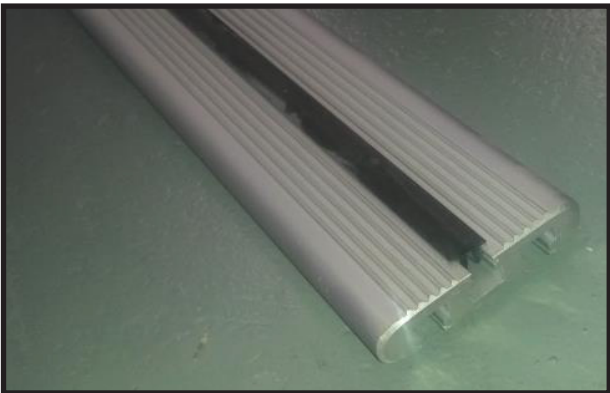
**Part Numbers:**

- LB-CR76-2
- LB-CR79-2
- LB-CR79-2

# Loadbars



19





# CANOPIES



# Aluminium Canopies

Big Country 4x4 manufactures two ranges of Aluminium Canopies

## ZAMBEZI



- Standard with a front can-slider window and a large rear hatch window for excellent rear vision
- Carpeted interior side walls
- Colour coded to a "flat colour" at no extra charge
- Options on rear hatch design
- Options on side hatch finish
- Options on side hatch design (solid, glass, sliders)

## KALAHARI



- Polished finish (no paint)
- No Carpet
- No windows
- No design options

(Just a strong no-nonsense canopy that does the job)

## COMMON FEATURES:

- Made from Big Country aluminium extrusions specially designed for strength, weight and versatility
- Fully welded construction with cross bracing to allow for substantial roof loading
- Bolt slots on the ceiling cross members great for attaching accessories
- Built-in bolt slots on the top of the roof to bolt on an awning, roofrack or loadbars (no drilling).
- Fully lockable and available with a number of optional extras:

- |  |                     |
|--|---------------------|
| • Bolt on roofrack or loadbars               | • Wolfpak slider    |
| • Slide-in Aluminium table (ceiling mounted) | • Internal lighting |
| • Kitchen Box                                | • Dust vents        |

Hilux 2005-2015  
Hilux 2016+  
LandCruiser 75  
LandCruiser 79  
Ford / Mazda  
2102+ Ford /  
Mazda '07-'11  
Defender 110  
Defender 130  
Nissan Navara  
Nissan NP300  
Isuzu DTeque  
Isuzu 2005 DMax  
Mitsubishi Colt  
VW Amarok  
Mahindra







# LandCruiser 79 D Cab

## Features:

1. Light weight but super strong!
2. Colour coded to any single flat colour at no extra charge
3. Carpeted interior side walls
4. Options on side hatch finish (painted or polished)
5. Options on side hatch design (solid aluminium, glass insert or glass sliders)
6. Options on rear hatch design (full glass is standard on this vehicle, or alum with glass insert (as shown) is an optional extra)
7. Roof frame extrusions have built in tracks for attachment of roof accessories (Roofrack, tent, awning, etc)
8. Ceiling cross members have built in tracks for attachment of accessories. (table, lights, HiLift jack, etc)
9. Fitted with a cab-slider window as standard, also available with solid glass or solid aluminium
10. One hatch per side opening upwards

## Specifications:

Made from: Big Country extruded aluminium  
Aluminium sheeting

Finish: Carpeted inside walls Painted or  
polished inside and out

## Optional Extras:

- Metallic paint colour coding
- Interior lighting
- Aluminium table and table slide
- Bolt on loadbars or roofrack
- Kitchen box
- Wolfpak slider
- Dust (positive pressure) vents

**Also Available in the Cheaper, "Kalahari" Version:**  
(No carpet, no paint, no windows)



## Packaging Size & Weight:

LxWxH: 165x170x74 cm  
Weight: 75kg

**PART NO: A-CPY-70LD**



# LandCruiser 79 S Cab

## Features:

1. Light weight but super strong!
2. Colour coded to any single flat colour at no extra charge
3. Carpeted interior side walls
4. Options on side hatch finish (painted or polished)
5. Options on side hatch design (solid aluminium, glass insert or glass sliders)
6. Options on rear hatch design (full glass is standard on this vehicle, or alum with glass insert (as shown) is an optional extra)
7. Roof frame extrusions have built in tracks for attachment of roof accessories (Roofrack, tent, awning, etc)
8. Ceiling cross members have built in tracks for attachment of accessories. (table, lights, HiLift jack, etc)
9. Fitted with a cab-slider window as standard, also available with solid glass or solid aluminium
10. Two hatches per side opening upwards

## Specifications:

Made from: Big Country extruded aluminium  
Aluminium sheeting

Finish: Carpeted inside walls Painted or  
polished inside and out

## Optional Extras:

- Metallic paint colour coding
- Interior lighting
- Aluminium table and table slide
- Bolt on loadbars or roofrack
- Kitchen box
- Wolfpak slider
- Dust (positive pressure) vents

**Also Available in the Cheaper, "Kalahari" Version:**  
(No carpet, no paint, no windows)



## Packaging Size & Weight:

	Standard	Lo-profile	Mid-profile
LxWxH:	235x170x74cm	235x170x74cm	200x150x70cm
Weight:	100kg	90kg	110kg

## PART NUMBERS:

**Standard: ORAA118**

**Lo-Profile: ORAA118-LP**

**Mid-Profile: RAA118/4+100**



"Tent Views into the Delta" - Okavango, Botswana

# VEHICLE SPECIFIC







# LandCruiser 70 Passenger Shelf

## Description:

This nifty little shelf simply slots into place when you need it. The surface is 360x200mm and is ideal for cameras, binoculars, etc. The mounting bracket is permanently fitted and is completely out of the way when the table is not in use. It is supplied with an optional stabilising gusset which you simply screw in.

The table is made from powdercoated stainless steel and the bracket is powdercoated mild steel



26

## Specifications:

Materials: Steel  
Finish: Black Powdercoated

## Packaging Size & Weight:

LxWxH: 36 x 20 x 1cm  
Weight: 1.5kg



**PART NO: A-SD-LC70-03**



# LandCruiser 70 Consol Box

## Description:

This product replaces the OEM centre consol box. It bolts down onto existing points – no drilling!

It boasts a hidden safe and a comfortable driving position. We have changed the the front tricket box to double up as a drinks holder and this is now fitted with with a removable insert



27

## Specifications:

Materials: Steel  
Finish: Powdercoated

## Packaging Size & Weight:

LxWxH: 37 x 33 x 18cm  
Weight: 7kg

## PART NUMBERS:

LC79 S/Cab: A-SD-LC79-01

LC79 D/Cab: A-SD-LC76-05

LC76 SWagon: A-SD-LC76-05





# LandCruiser 70 Dash Tray

## Description:

Two different variations of this product are available:

- For older steel dash models without airbags
- For more recent models with airbags

An easy to fit, aluminium, carpeted tray that attaches to the top centre of the dashboard with double sided tape, providing a very useful trinket tray. Does not interfere with the airbags

Steel Dash Tray:



Airbag Model Dash Tray:



## Specifications:

Materials: Aluminium  
Finish: Grey Powdercoated

## Packaging Size & Weight:

LxWxH: 28 x 16 x 6cm  
Weight: 1kg

## PART NUMBERS:

Steel Dash: A-SD-DASHTRAY1

Airbag: A-SD-DASHTRAY2



# LandCruiser 70 Cupholders

## Description:

An easy to fit, powdercoated aluminium, cupholder that rivets onto the side of the dash – holding your drink in front of the air con vent. You'll be amazed at how effectively this keeps your drink cool.

Can also be used for back seat passengers on the LC76 Stationwagon.

Suitable for all 70 Series models.



## Specifications:

Materials: Aluminium  
Finish: Grey Powdercoated

## Packaging Size & Weight:

LxWxH: 15 x 8 x 8cm  
Weight: 0.5kg

PART NO: A-SD-CUPHOLDER1





# LandCruiser 70 Door Cupholders

## Description:

This nifty cup-holder simply hooks into the window rubber and then sticks down against the door with double sided tape. No drilling and not in the way when driving. The carpeted base and rubber trimming ensure no rattles.



## Specifications:

Material Aluminium  
Finish Grey Powdercoated

## Packaging Size & Weight:

LxWxH: 9 x 14 x 11 cm  
Weight: 0.2kg

**PART NUMBERS:**  
**69-75mm ø: A-SD-CUPHLDER2**  
**80-86mm ø: A-SD-CUPHLDER3**



# LandCruiser 70 Door Pockets

## Description:

An easy to fit, aluminium, carpeted door pocket. It attaches to the door trim panel.

Sold in pairs.



## Specifications:

Materials: Aluminium  
Finish: Grey Powdercoated & Carpeted

## Packaging Size & Weight:

LxWxH: 40 x 25 x 15cm  
Weight: 2kg

**PART NO: A-SD-LC70-DP1**





# LandCruiser 70 Rear Light Guards

## Description:

A must if your Cruiser Pickup is a “work horse”.

Prevent that taillight lens from being broken by a careless boot.

Supplied with all you will need to fit them



## Specifications:

Materials: Steel  
Finish: Black Powdercoated

## Packaging Size & Weight:

LxWxH: 25 x 10 x10cm  
Weight: 2kg

**PART NO: A-PK-LC70-02**



# LandCruiser 70 Steering Guard

## Description:

Made from Anodised Aluminium this steering guard bolts into existing bolt points on the chassis via two sturdy steel brackets. It protects vulnerable parts of the vehicle and it also looks pretty cool.

Something which you can easily fit yourself.

This product will fit most of the 70 Series variations.



## Specifications:

Bashplate: 6mm Aluminium - Anodised  
Mountings: 8mm Steel - Powdercoated

## Packaging Size & Weight:

LxWxH: 75 x 40 x 10cm  
Weight: 20kg

**PART NO: A-PK-LC70-STEER1**







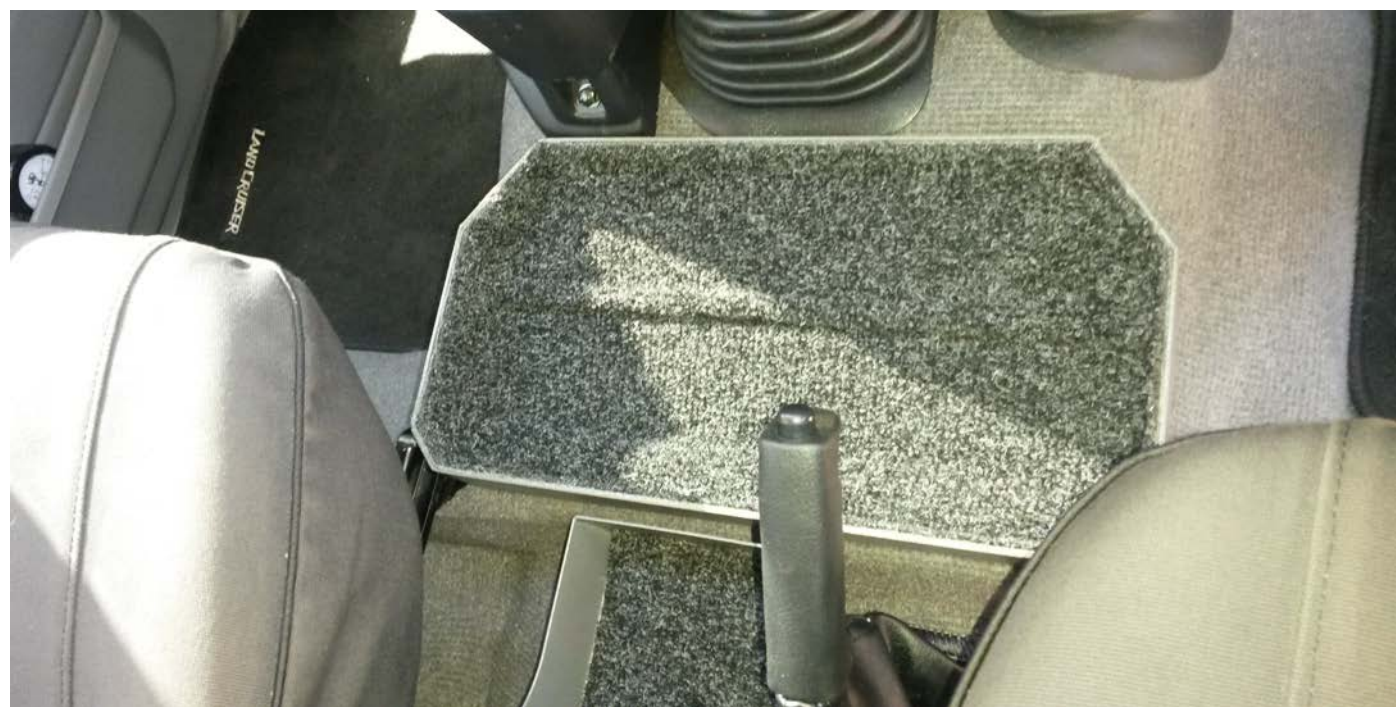
# LandCruiser 70 TT Tray

## Description:

An easy to fit, steel, carpeted tray that attaches to the two seat anchor bolts providing a very useful trinket tray. Does not interfere with the airbags.

This product will fit most of the 70 Series variations.

Available in two different sizes – depending on what motor is fitted to the vehicle



34



## Specifications:

Materials: Aluminium  
Finish: Grey Powdercoated

## Packaging Size & Weight:

LxWxH: 28 x 16 x 6cm  
Weight: 1kg

**PART NUMBERS:**  
**V8 Diesel + V6: A-SD-LC70-08P**  
**4.2 Diesel: A-SD-LC70-08D**



# LC70 TT Tray Twin Cupholder

## Description:

Big Country has come up with yet another great idea for your LandCruiser 70 Series. This Twin Cupholder will simply rivet on to your TT Tray.

## Features include:

- 80mm dia cupholder with anti-rattle stretchy cord
- Neat Powerbox with Voltmeter and Twin USB

The Cupholders are also available without the powerbox. The TT Tray can be used either with our Consol Box or Fridge bracket products

Suitable for all 70 series models



35

## Specifications:

Materials: Steel  
Finish: Powdercoated

## Packaging Size & Weight:

	<u>Single Cup:</u>	<u>Twin Cup:</u>
LxWxH:	11 x 10 x 8cm	31 x 10 x 8cm
Weight:	0.2kg	0.5kg

**PART NUMBERS:**  
**Single Cupholder: A-SD-CUPHLDR42**  
**Twin Cup with Power: A-SD-LC70-04**





# LandCruiser 70 Visor Shelf

## Description:

This handy and sturdy shelf is designed to attach on the sunvisor mounting holes – no drilling into the vehicle!

Ideal for mounting a 2-way radio or for keeping your bird guide and maps within easy reach. It extends across the full width of the vehicle and has additional support on each end to the roof grab handles. The sun visors then simply mount onto the underneath surface of the visor shelf.

This product is not recommended if you are very tall (6ft +).

This product will fit into most of the 70 Series variations.



## Specifications:

Materials: Aluminium  
Finish: Carpeted

## Packaging Size & Weight:

LxWxH: 130 x 20 x 3.5 cm  
Weight: 3kg

**PART NO: A-SD-LC70-01**



# LandCruiser 70 Arm Rest

## Description:

A simple and yet extremely comfortable little shelf to rest your elbow on. No fitment required, this steel powdercoated unit just locates in the window rubber (without being able to scratch the glass) and then you simply slide it forwards or backwards to suit your seating position. Two small pieces of sponge tape protect the door paintwork and prevent it from slipping around.



## Specifications:

Materials: Steel  
Finish: Powdercoated

## Packaging Size & Weight:

LxWxH: 12 x 3 x 3cm  
Weight: 0.1kg

**PART NO: A-SD-LC70-02**





# LandCruiser 70 Waeco Fridge

## Description:

This remarkably lightweight 12v compressor cooler is extremely compact and easy to use. Very popular with the 70 Series Cruiser guys, as a "between the seats" drinks fridge – see also our purpose made bracket to fit this fridge to your 70 series.

Just as an indication, the 12ltr capacity is capable of holding 11 "long tom" beer cans (don't drink and drive). It also has an internal light

38



## Specifications:

Rated input current (DC) 2.2A @DC12V/1.3A @DC24V A  
Input voltage (DC) 12/24 V

## Packaging Size & Weight:

LxWxH: 570 x 252 x 370 cm  
Weight: 9.5kg

**PART NO: F-FRIDGE-WCF11**



# LandCruiser 70 Consol Fridge Bracket

## Description:

Unbolt the useless OEM consol box, bolt in our specially made bracket to existing points and strap down the Waeco CF11 fridge. The fridge is a snug fit, but there is no drilling or cutting or moving of seats required. The design also incorporates a small safe.

Specifically designed to fit the Waeco CF11 fridge but can also accomodate the IndelB 15 or 18ltr and the Snomaster BDC35



39

## Specifications:

Materials: Steel  
Finish: Grey  
Powdercoated

## Fridges that Fit:

- IndelB51A
- Snomaster40
- Waeco40

*Bracket only – fridge to  
be ordered separately*

## Packaging Size & Weight:

	4 Door:	2 Door:
LxWxH:	60 x 19 x 20cm	63 x 20 x 8cm
Weight:	3kg	3kg

## PART NUMBERS:

4 Door:	A-SD-LC70-CFB4
2 Door:	A-SD-LC70-CFB2





# LandCruiser 76 Gullwings

## Description:

This product replaces the side rear windows. When opened you have the full window aperture access into the loadbay or "kitchen box".

- Neat, rugged and lockable
- Made from rolled Aluminium (powdercoated)
- Provides excellent access to the loadbay or to our optional internal "Kitchen Box"
- Water and dust proof
- Well finished off with a specially made corner trim panel

Sold in a pair

Now with a new "Gutter clamp" hinge.



## Packaging Size & Weight (2 parcels)

LxWxH: 78 x 54 x 10cm  
Weight: 15.85kg

LxWxH: 60 x 26 x 7cm  
Weight: 6kg

## Specifications:

Materials: Aluminium Chequer plate  
Finish: Black Powdercoated

*Kitchen box also available*

**PART NO: A-SD-LC76-02**



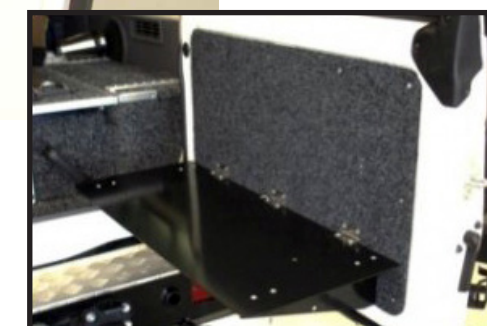
# LandCruiser 76 Rear Door Table

## Description:

This product replaces the RHS rear door inner trim panel. To access the stainless steel table, simply loosen two 1/4-turn Panex fasteners and fold down the table. When not in use, the table folds away against the carpeted aluminium backing plate occupying almost no space at all.

Really handy if you need to make a quick cuppa or a GnT.

Suitable for all 76 and 78 Series models.



## Specifications:

Materials: Aluminium and Stainless Steel  
Finish: Powdercoated and Carpeted

## Packaging Size & Weight:

LxWxH: 71 x 41 x 2cm  
Weight: 5kg

**PART NO: A-SD-LC76-04**





# LandCruiser 79 Chassis Toolbox

## Description:

A lockable powdercoated steel box bolted onto existing threaded holes situated in front of the rear wheels  
Ideal for storing dirty straps and other recovery equipment.

This toolbox is not waterproof and is equipped with drainage holes

The product is available in three variations.

- Shown here fitted to the LHS of the vehicle (see main pic below)
- Also available for the RHS (in front of rear wheel)
- And also on the RHS rear corner (behind the rear wheel)

## Suitable for:

LC79 Single Cab: Can fit all three  
LC79 Double Cab: Can only fit the Right Rear toolbox (behind rear wheel)



## Specifications:

Materials: Mild Steel and stainless steel hinges  
Finish: Black Powdercoated

## Packaging Size & Weight:

LxWxH: 58 x 18 x 26cm  
Weight: 8kg

## PART NUMBERS:

Front RHS A-SD-LC70-CTFR

Front LHS A-SD-LC70-CTFL

Rear RHS A-SD-LC70-CTRR



# LandCruiser 79 Loadbay Skins

## Description:

The loadbay of the 70 series LandCruiser pickup is only a single skin – if anything heavy rolls around in the back, it will end up making ugly dents on the outside of the body panel.

This 3-piece kit is made from 1.2mm Galv sheeting (sides) and 1.6mm Aluminium cheqr plate (tailgate), and is best fitted before any rubberising is done.

## Suitable for:

LC79 Single Cab  
LC79 Double Cab (OEM version)



## Specifications:

Materials: Galvanised Steel & Aluminium chequer plate  
Finish: Galvanised ready for rubberising

## Packaging Size & Weight:

LxWxH: 220 x 45 x 10cm  
Weight: 12kg

## PART NUMBERS:

Single Cab A-PK-LC79-01

Double Cab A-SD-LC79-02





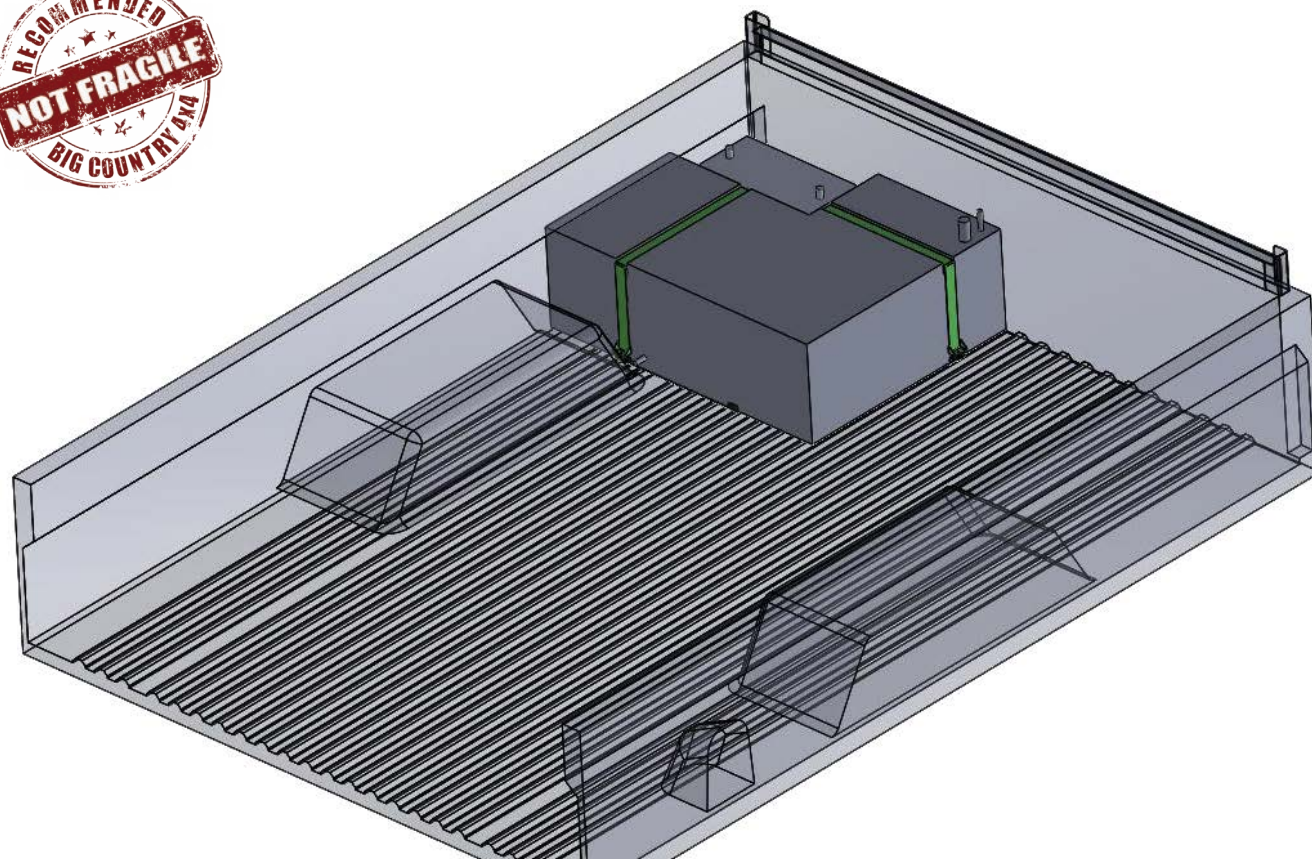
# LandCruiser 79 Watertank

## Description:

- 100ltr, plastic rotor-moulded tank
- With a space for a deep cycle battery
- Complete with a steel base plate and steel straps
- Fits perfectly in front of the drawer system beneath the bed extension
- Supplied with a hose kit including filler, filler cap and breather



44



## Specifications:

Materials: Black Plastic and Steel  
Finish: Black Powdercoated and Black Steel

## Packaging Size & Weight:

LxWxH: 62 x 78 x 26cm  
Weight: 12kg

**PART NO: WAT012**







**Disclaimer:**

All rights reserved. © 2017. Big Country 4x4 consultants, its sponsors, contributors and advertisers disclaim all liability for any loss, damage, injury or expense that might arise from the use of, or reliance upon, the services or intellectual property contained herein.

Please note that the information in this catalogue is subject to change without prior notice and Big Country 4x4 consultants, its sponsors and contributors cannot be held liable for these changes.

**Contact Us:**

**Physical Address:**

358 Politician Avenue  
Northlands Business Park  
37 New Market Street  
Northriding

**GPS:**

S26 01,939; E027 57,494

**Email:**

admin@bigcountry.co.za

**Phone:**

+2711 795 9700

