



LANDCRUISER 100 SERIES

PRODUCT CATALOGUE 3rd Ed.



"Male Lion" - Botswana



Drawer Systems.....	pg 4
Roofracks.....	pg 8
Vehicle Specific.....	pg 12



DRAWER SYSTEMS



Big Country 4x4 manufactures two ranges of drawer systems

ZAMBEZI

Best suited for LDV's



Reason:

- LDV loadbay is generally longer than 1200mm - fully loaded drawers can get heavy
- LDV loadbay can be a dirty place not suited to telescopic sliders

The drawers run on heavy duty sealed roller bearings (30x10) capable of handling heavy loads.

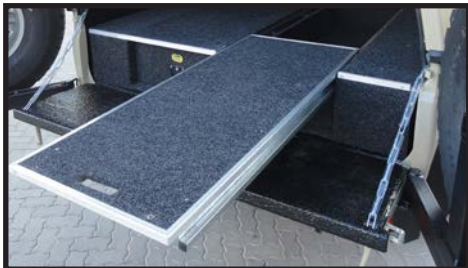
Drawers are good for loads of 200kg per drawer.

Supplied with an integral pull-out sliding top ideal for mounting a fridge.

An easily available plastic "meat tray" works excellently.



LandCruiser 79
Hilux
Ford Ranger
VW Amarok
Defender 130
Nissan
Isuzu
Triton
Colt



Drawer Systems

SAVUTE

Best suited for SUV's



Reason:

- Shorter loadbays, seldom longer than 1000mm
- Cleaner environment
- A neater finished off product is required

Drawers slide out their full length with telescopic slide

Most models supplied complete with trays and dividers for optimum packing efficiency.

Very easy to add a fridge slider and remove it between trips.

Loadbay still very useable between trips.



LandCruiser 76 SW
Fortuner
LandCruiser 80
LandCruiser 100
LandCruiser 200
Prado120
Prado150
Disco 3 or 4
FJ Cruiser
Pajero CK LWB
Defender 90/110
Merc GWagon
Nissan Patrol
Jeep Wrangler
Suzuki Jimny





LandCruiser 100

SAVUTE

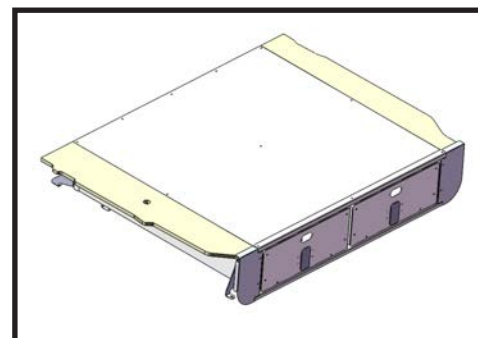
Twin Drawer



6

Features:

1. Designed for use in SUV's
2. Made to fit the vehicle loadbay perfectly.
3. Stainless steel heavy duty sliders for full drawer length travel.
4. Side panels removable to access additional wheelarch packing space.
5. No drilling—all mounting onto existing points.
6. Lockable.
7. Supplied standard with 2xDrawer trays, 2xDividers, 1xTip up work surface.



Specifications:

Made from: Lasercut Galvanised sheet steel
Top Surface: 12mm Superwood, Carpeted
Configuration: Twin, equal, side by side
Finish: Black powder-coated, carpeted
Sliders: Telescopic st/steel HD bearing sliders
Carrying weight: 120kg per drawer

Sizes:

Drawer pack width: 488mm
Drawer pack length: 1034mm
Drawer pack depth: 201mm
Overall height: 257mm
Tub width: 1060mm
Tub length: 1060mm

*Also see the combo drawer
available for this model!*

Packaging Size & Weight:

LxWxH: 110x110x26 cm
Weight: 75kg

PART NO: A-SD-TD3.100



LandCruiser 100+FSP

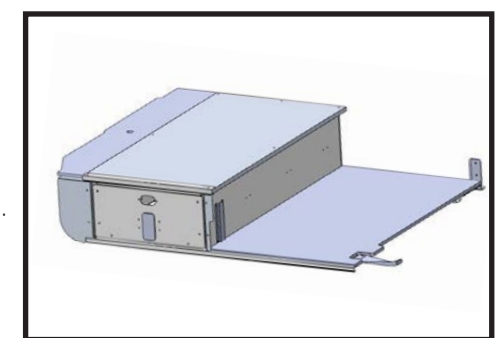
Twin Drawer



7

Features:

1. Designed for use in SUV's
2. Made to fit the vehicle loadbay perfectly.
3. Stainless steel heavy duty sliders for full drawer length travel.
4. Side panel on LHS is removable for additional wheelarch packing space.
5. No drilling—all mounting onto existing points.
6. Lockable.
7. Carpeted wooden platform sized to suit an 80ltr fridge slider
8. Dividers and drawer trays excluded



Specifications:

Made from: Lasercut Galvanised sheet steel
Top Surface: 12mm Superwood, Carpeted
Configuration: Single, LHS
Finish: Black powder-coated, carpeted
Sliders: Telescopic st/steel HD bearing sliders
Carrying weight: 120kg per drawer

Sizes:

Drawer pack width: 435mm
Drawer pack length: 1040mm
Drawer pack depth: 195mm
Overall height: 260mm
Tub width: 477mm
Tub length: 1061mm

*Also see the combo drawer
available for this model!*

Packaging Size & Weight:

LxWxH: 108 x 110 x 27cm
Weight: 50kg

PART NO: A-SD-SD13.1+FSP

"Old Ellie Drinking" - Okavango Delta, Botswana

ROOFRACKS



Aluminium Roofracks

Aluminium Roofracks

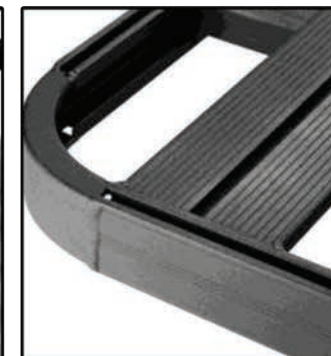
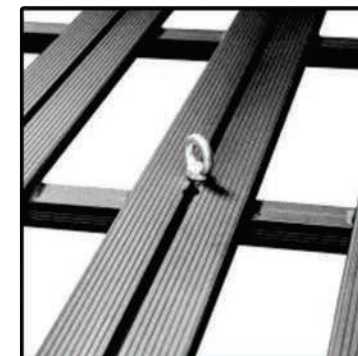
WHAT MAKES BIG COUNTRY ROOF RACKS THE BEST?

- Longitudinal Floorplanks - **negligible wind noise**
- **Dove-tailed** cross members and **fully welded** for unrivalled strength - rated for 250kg
- **Flush** on top
- **M8 Nut slot** in all extrusions
- **Dual nut slots** in perimeter extrusion for sturdy fitment of accessories
- **Fully assembled** ready to fit
- Large range of **accessory brackets** available
- **Custom** sizes are possible

All roofracks can be supplied with an optional bolt-on toprail



*Big Country **DOES NOT** use rivnuts to secure a roofrack to the roof of a vehicle.*





Aluminium Roofracks

Specifications:

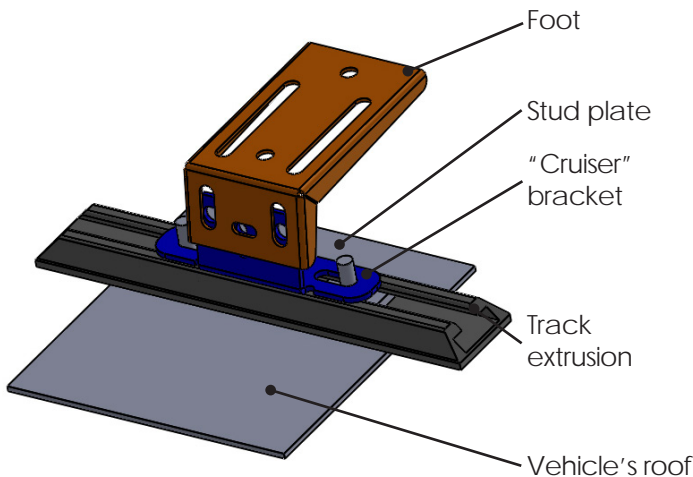
Construction:	Fully Welded Aluminium—not just bolted together	
Rated for (kg):	250kg, subject to vehicle load capability	
Orientation:	Longitudinal Floorplanks	
Configuration:	Assembled ready to fit	
Mounting Type:	Track Mount to existing mounting holes	
Finish:	Black Powder-coated	
Number of feet:	3 x height adjustable steel feet per side	

Sizes:

	Full Rack	Half Rack
--	-----------	-----------

Length (mm):	2300	1700
Width (mm):	1350	1350
Toprail Options:	Full or half	Full
No. of feet/ side:	4	3

LandCruiser 100



Typical Track Mount Layout



Packaging Size & Weight:

	Full Rack	Half Rack
LxWxH:	231x140x6cm	170x140x6cm
Weight:	39kg	25kg

PART NUMBERS:

Full Rack:	A-RR-TLC-1001
Half Rack:	A-RR-TLC-1002



Aluminium Roofracks

Specifications:

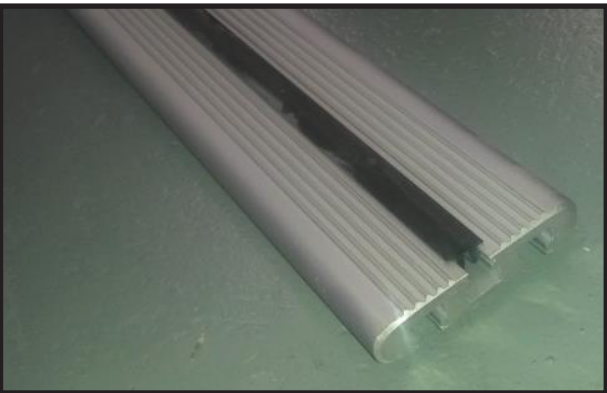
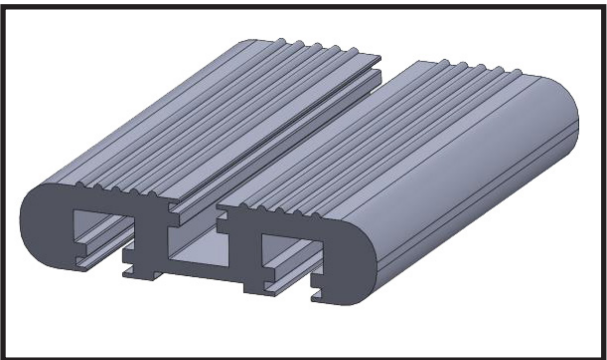
1. Heavy Duty Aluminium extrusion (2.4kg / meter, with section thicknesses of up to 12mm)
2. Aerodynamically shaped for minimal wind noise.
3. Fitted with rubber bolt slot inserts
4. Bolt slots suitable for standard M8 fasteners
5. A cheaper alternative to a full roofrack
6. Ideal for mounting a rooftop tent or Ostrich wing awning
7. Available for all vehicles in the Big Country roofrack range
8. Supplied in a polished finish with rubber end caps
9. Generally supplied in pairs

Vehicle:

- LC100

Part Numbers:

LB-CR100-2



"Tent Views into the Delta" - Okavango, Botswana

VEHICLE SPECIFIC





LandCruiser 100VX Bellyplate

Description:

Made from 6mm Aluminium, this single plate is a direct replacement for the somewhat flimsy OEM plastic guard.

Easy to fit yourself.

Note: This product is only suited to the models with independent front suspension – It does not fit the GX model (live front axle)



Specifications:

Material 6mm Aluminium
Finish Polished

Packaging Size & Weight:

LxWxH: 100x100x6 cm
Weight: 15kg



PART NO: A-PK-LC100.1



LandCruiser 100 Gullwings

Description:

Made from two layers of aluminium sheeting, lasercut and formed to fit the vehicle perfectly. Dust and waterproof and lockable.

This easy access to the loadbay area is especially useful if your vehicle is fitted with wheelcarriers. Sold as a pair.

Fitment should preferably be carried out by an experienced fitment centre.

Fitment to models with "pop-out" windows is much easier.



Specifications:

Material Aluminium
Finish Powdercoated

Packaging Size & Weight:

LxWxH: 85x60x10 cm
Weight: 5kg



PART NO: A-SD-LC100.2V



LandCruiser Side Light Guards

Description:

A neat st/steel powdercoated cage designed to rivet over the side indicator lenses. Designed to be a theft deterrent as this is a popular place where thieves gain access to the electrical circuitry of the vehicle.

Sold in a pair with black headed rivets.



Specifications:

Material Stainless Steel
Finish Powdercoated

Packaging Size & Weight:

LxWxH: 4x2x1 cm
Weight: 0.5kg

This product is suitable for fitment to:

- LandCruiser 100
- LandCruiser 70
- FJ Cruiser



PART NO: A-PK-SLG1



LandCruiser 100 Tailgate Storage

Description:

An ingenious way of opening up a huge amount of wasted packing space. Especially useful to gain quick access to things like a first aid kit or light recovery items. It is not advisable to consider this space for storing anything heavy. It would also be illegal to use it to hide meat etc when crossing borders and vet fences.

Made from two layers of 4.5mm Alum sheeting with welded in supports make this product strong enough for the average man to stand on.

Carpeted on the inside and lockable. Made with two hatches, so that it can still be accessed if one of the drawers is open.

Must preferably be fitted by an experienced fitment centre.



Specifications:

Material Laser cut Aluminium
Finish Powdercoated

Packaging Size & Weight:

LxWxH: 136 x 38 x 2cm
Weight: 10kg



PART NO: A-SD-LC100.1



Disclaimer:

All rights reserved. © 2017. Big Country 4x4 consultants, its sponsors, contributors and advertisers disclaim all liability for any loss, damage, injury or expense that might arise from the use of, or reliance upon, the services or intellectual property contained herein.

Please note that the information in this catalogue is subject to change without prior notice and Big Country 4x4 consultants, its sponsors and contributors cannot be held liable for these changes.

Contact Us:

Physical Address:

358 Politician Avenue
Northlands Business Park
37 New Market Street
Northriding

GPS:

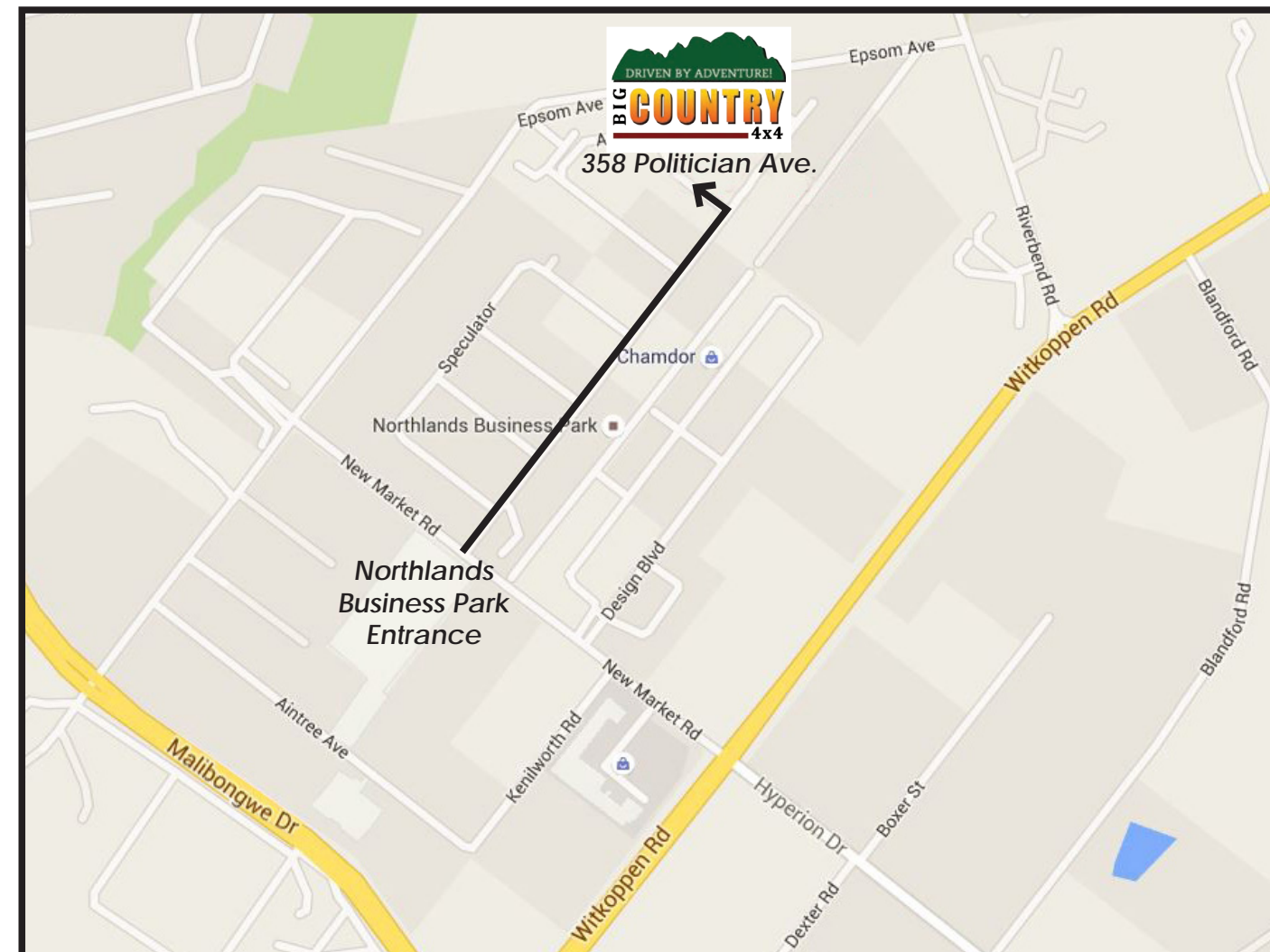
S26 01,939; E027 57,494

Email:

admin@bigcountry.co.za

Phone:

+2711 795 9700



"A Black Heron Fishing" - Botswana



