

DRIVEN BY ADVENTURE!

BIG COUNTRY
4x4

HILUX VIGO

PRODUCT CATALOGUE 2017



"Charging Buffalo" - Chobe National Park, Botswana





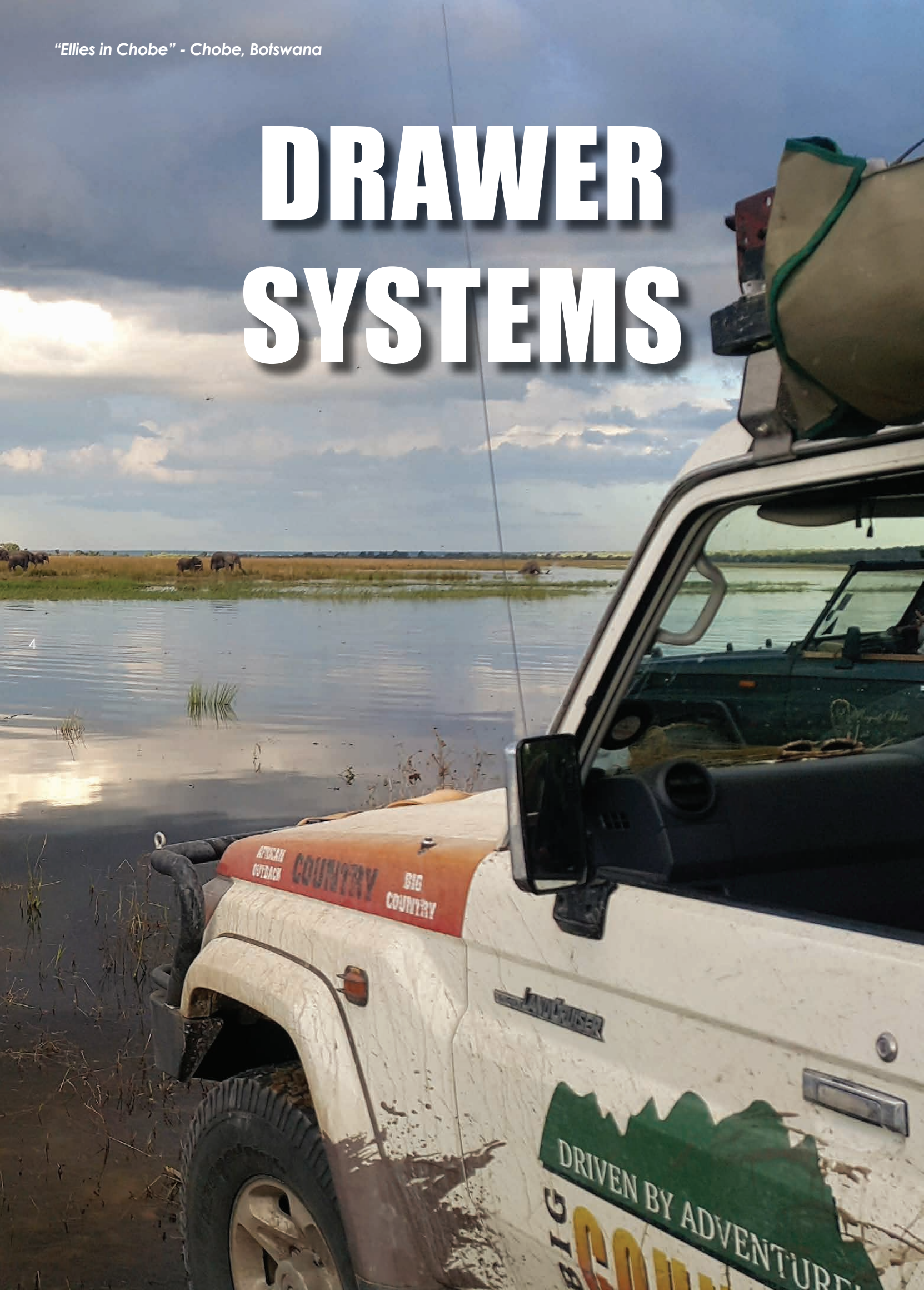
Drawer Systems.....	pg 4
Roof racks.....	pg 8
Canopies.....	pg 12
General Accessories.....	pg 16
Vehicle Specific.....	pg 18



"Ellies in Chobe" - Chobe, Botswana

DRAWER SYSTEMS

4





Drawer Systems



Big Country 4x4 manufactures two ranges of drawer systems

ZAMBEZI

Best suited for LDV's



Reason:

- LDV loadbay is generally longer than 1200mm - fully loaded drawers can get heavy
- LDV loadbay can be a dirty place not suited to telescopic sliders

The drawers run on heavy duty sealed roller bearings (30x10) capable of handling heavy loads.

Drawers are good for loads of 200kg per drawer.

Supplied with an integral pull-out sliding top ideal for mounting a fridge.

An easily available plastic "meat tray" works excellently.



LandCruiser 79
Hilux
Ford Ranger
VW Amarok
Defender 130
Nissan
Isuzu
Triton
Colt



SAVUTE

Best suited for SUV's



Reason:

- Shorter loadbays, seldom longer than 1000mm
- Cleaner environment
- A neater finished off product is required

Drawers slide out their full length.

Most models supplied complete with trays and dividers for optimum packing efficiency.

Very easy to add a fridge slider and remove it between trips.

Loadbay still very useable between trips.



LandCruiser 76 SW
Fortuner
LandCruiser 80
LandCruiser 100
LandCruiser 200
Prado 120
Prado 150
Disco 3 or 4
FJ Cruiser
Pajero CK LWB
Defender 90/110
Merc GWagon
Nissan Patrol Y61
Jeep Wrangler
Suzuki Jimny





ZAMBEZI

Hilux Vigo

[2005-2015]

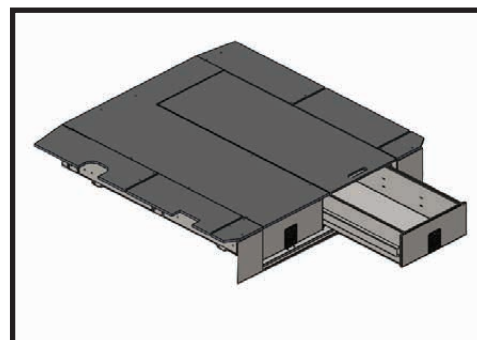
Twin Drawer



6

Features:

1. Designed for use in LDV's
2. Made to fit the vehicle loadbay perfectly.
3. Roller Bearings provide an extremely rugged design
4. Side panels removable to access additional wheelarch packing space.
5. Integral top sliding surface—ideal for mounting a fridge
6. Lockable.
7. Dividers and plastic trays are available.
8. Available with “Bed Extensions” for Single or Extra Cab



Specifications:

Made from: Lasercut Galvanised sheet steel
 Top Surface: 12mm Superwood, Carpeted
 Configuration: Twin, equal, side by side
 Finish: Carpeted
 Sliders: Roller bearings
 Carrying weight: 200kg per drawer

Sizes:

Drawer pack width: 435mm
 Drawer pack length: 1430mm
 Drawer pack depth: 220mm
 Overall height: 265mm
 Tub width: 1000mm
 Tub length: 1500mm

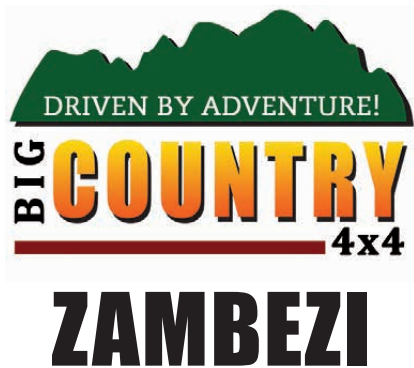
Packaging Size & Weight:

LxWxH: 150x101x28 cm
 Weight: 85kg

Part Number: RD-HXDA004

Bed Ext for Single Cab: EXT. HLVSC

Bed Ext for ExtraCab: EXT.HLVEC



Commercial Drawers

Description:

Commercial drawers are supplied without the integral fridge slider and without the side panels. They can either be finished off with a carpeted wood top or supplied with an aluminium chequer plate top and face panels.

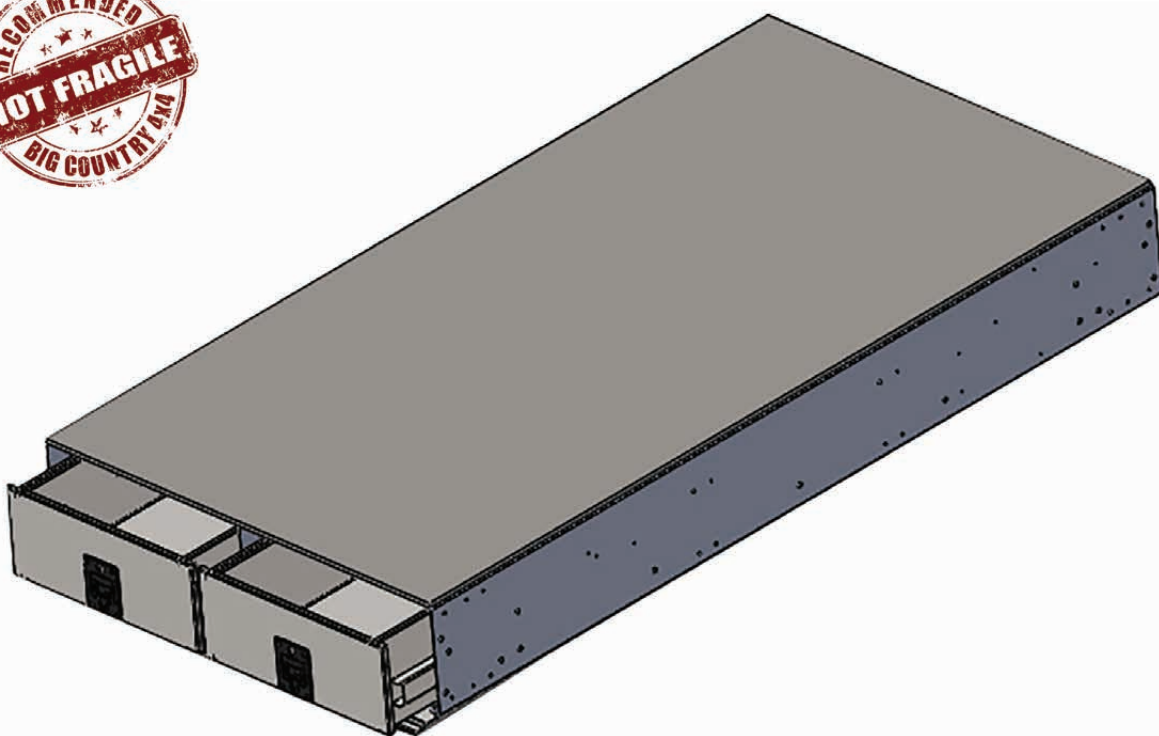
All these drawers have an overall height of 265mm

Commercial Drawer Sizes:

1300 x 1000, carpeted top
1301 x 1000, Aluminium chequer plate top
1500 x 1000, carpeted top
1500 x 1000, Aluminium chequer plate top
1700 x 1000, carpeted top
1700 x 1000, Aluminium chequer plate top
2000 x 1000, carpeted top
2000 x 1000, , Aluminium chequer plate top

Part Number:

RD/COMA002
RD/COMA002A
RD/COMA005
RD/COMA005A
RD/COMA004
RD/COMA004A
RD/COMA003
RD/COMA003A



7

Features:

1. Designed for use in LDV's
2. Made to fit between the vehicle wheelarches
3. Roller Bearings provide an extremely rugged design
4. No side panels – these drawers are open down the sides
5. Solid top surface – no slider included
6. Lockable.

Specifications:

Made from: Lasercut Galvanised sheet steel
Top Surface: 12mm Superwood, Carpeted
Configuration: Twin, equal, side by side
Finish: Carpeted or Aluminium Chequer plate
Sliders: Roller bearings
Carrying weight: 200kg per drawer

"Drifters" - Maun, Botswana

ROOFRACKS





Aluminium Roofracks

Aluminium Roofracks

WHAT MAKES BIG COUNTRY ROOF RACKS THE BEST?

- Longitudinal Floorplanks - **negligible wind noise**
- **Dove-tailed** cross members and **fully welded** for unrivalled strength - rated for 250kg
- **Flush** on top
- **M8 Nut slot** in all extrusions
- **Dual nut slots** in perimeter extrusion for sturdy fitment of accessories
- **Fully assembled** ready to fit
- Large range of **accessory brackets** available
- **Custom** sizes are possible

All roofracks can be supplied with an optional bolt-on top rail

pg 9



Big Country DOES NOT use rivnuts to secure a roofrack to the roof of a vehicle.





Aluminium Roofracks

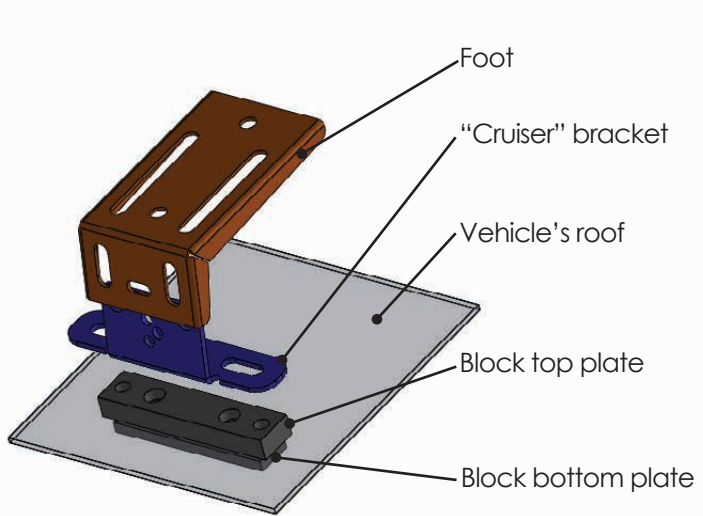
Hilux Vigo [2005-2015]

Specifications:

Construction:	Fully Welded Aluminium - not just bolted together
Rated for (kg):	250 kg, subject to vehicle load capability
Orientation:	Longitudinal Floorplanks
Configuration:	Assembled ready to fit
Mounting Type:	Block Mount
Finish:	Black Powder-coated
Number of feet:	2 x height adjustable steel feet per side

Sizes:

	<u>Double Cab</u>	<u>Extra Cab</u>	<u>Single Cab</u>
Length (mm):	1400	1200	800
Width (mm):	1225	1225	1225
Toprail Options:	Full	Full	Full



Typical Block Mount Layout



Packaging Size & Weight:

	<u>Double Cab</u>	<u>Extra Cab</u>	<u>Single Cab</u>
LxWxH:	140x123x6cm	120x123x6cm	120x80x6cm
Weight:	20kg	17kg	15kg

PART NUMBERS:

Double Cab:	A-RR-HLX-V2
Extra Cab:	A-RR-HLX-EC
Single Cab:	A-RR-HLX-V1



Aluminium Roofracks

Loadbars

Specifications:

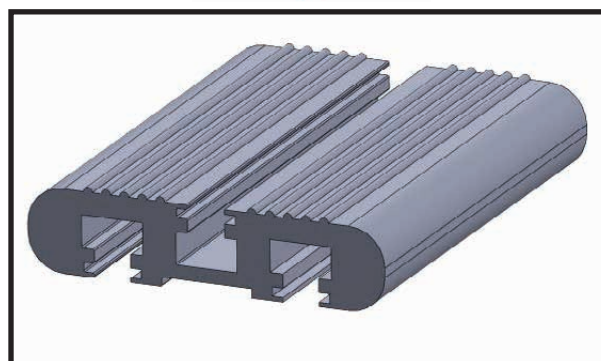
1. Heavy Duty Aluminium extrusion (2.4kg / meter, with section thicknesses of up to 12mm)
2. Aerodynamically shaped for minimal wind noise.
3. Fitted with rubber bolt slot inserts
4. Bolt slots suitable for standard M8 fasteners
5. A cheaper alternative to a full roofrack
6. Ideal for mounting a rooftop tent or Ostrich wing awning
7. Available for all vehicles in the Big Country roofrack range
8. Supplied in a polished finish with rubber end caps
9. Generally supplied in pairs

Vehicle:

- Hilux Vigo 2005-2015
- LC76 S/wagon
- LC78 Troopy
- LC79
- LC100
- LC200
- LC80
- Prado120
- Prado150
- Fortuner
- FJ Cruiser
- Defender 110
- Defender 90
- Defender 130
- Discovery 3 or 4
- Patrol Y61
- G-Wagon
- Ranger (2004-2012)
- Ranger T6 (2012+)
- Amarok
- Pajero - CK
- Everest 2010
- D-Teq / DMax
- Hilux Revo 2016 +

Part Numbers:

- LB-HV1250/T
- LB-CR76-2
- LB-CR79-2
- LB-CR79-2
- LB-CR100-2
- LB-CR200-2
- LB-CR80-2
- LB-PR120-2
- LB-PR150-2
- LB-FORT-2
- LB-FJC-2
- LB-DEF-2
- LB-DEF-2
- LB-DEF-2
- LB-DISC3
- LB-NPAT-2
- LB-MG-2
- LB-FMT
- LB-HV1250/B
- LB-VWAMA
- LB-PCKL-2
- LB-FRDEV-2
- LB-IDMAX
- LB-HR1250/T



"Zebra" - Botswana

CANOPIES





Aluminium Canopies

Big Country 4x4 manufactures two ranges of Aluminium Canopies

ZAMBEZI



- Standard with a front can-slider window and a large rear hatch window for excellent rear vision
- Carpeted interior side walls
- Colour coded to a "flat colour" at no extra charge
- Options on rear hatch design
- Options on side hatch finish
- Options on side hatch design (solid, glass, sliders)

KALAHARI



- Polished finish (no paint)
- No Carpet
- No windows
- No design options

(Just a strong no-nonsense canopy that does the job)

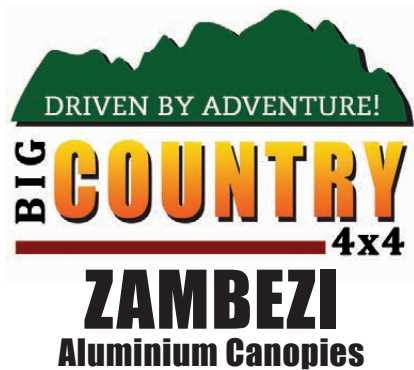
13

COMMON FEATURES:

- Made from Big Country aluminium extrusions specially designed for strength, weight and versatility
- Fully welded construction with cross bracing to allow for substantial roof loading
- Bolt slots on the ceiling cross members great for attaching accessories
- Built-in bolt slots on the top of the roof to bolt on an awning, roofrack or loadbars (no drilling).
- Fully lockable and available with a number of optional extras:
 - Bolt on roofrack or loadbars
 - Slide-in Aluminium table (ceiling mounted)
 - Kitchen Box
 - Wolfpak slider
 - Internal lighting
 - Dust vents



Hilux 2005-2015
Hilux 2016+
LandCruiser 75
LandCruiser 79
Ford / Mazda
2102+ Ford /
Mazda '07-'11
Defender 110
Defender 130
Nissan Navara
Nissan NP300
Isuzu DTeque
Isuzu 2005 DMax
Mitsubishi Colt
VW Amarok



Hilux Vigo D & Extra Cab [2005-2015]

Features:

1. Light weight but super strong!
2. Colour coded to any single flat colour at no extra charge
3. Carpeted interior side walls
4. Options on side hatch finish (painted or polished)
5. Options on side hatch design (solid aluminium, glass insert or glass sliders)
6. Options on rear hatch design (full glass is standard on this vehicle, or alum with glass insert (as shown) is an optional extra)
7. Roof frame extrusions have built in tracks for attachment of roof accessories (Roofrack, tent, awning, etc)
8. Ceiling cross members have built in tracks for attachment of accessories. (table, lights, HiLift jack, etc)
9. Fitted with a cab-slider window as standard, also available with solid glass or solid aluminium
10. One hatch per side opening upwards

Specifications:

Made from: Big Country extruded aluminium
Aluminium sheeting

Finish: Carpeted inside walls Painted or
polished inside and out

Optional Extras:

- Metallic paint colour coding
- Interior lighting
- Aluminium table and table slide
- Bolt on loadbars or roofrack
- Kitchen box
- Wolfpak slider
- Dust (positive pressure) vents

Also Available in the Cheaper, "Kalahari" Version:

(No carpet, no paint, no windows)



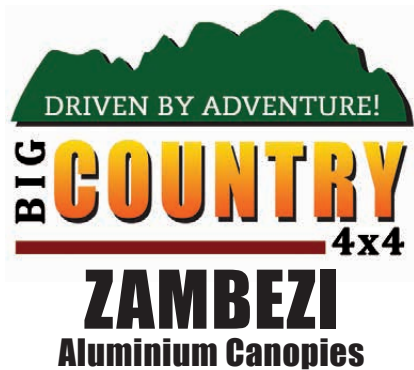
Packaging Size & Weight:

	Double Cab	Extra Cab
LxWxH:	160x160x55cm	185x160x55cm
Weight:	70kg	85kg

PART NUMBERS:

Double Cab: A-CPY-HLVD

Extra Cab: ORAA160



Hilux Vigo S Cab [2005-2015]

Features:

1. Light weight but super strong!
2. Colour coded to any single flat colour at no extra charge
3. Carpeted interior side walls
4. Options on side hatch finish (painted or polished)
5. Options on side hatch design (solid aluminium, glass insert or glass sliders)
6. Options on rear hatch design (full glass is standard on this vehicle, or alum with glass insert (as shown) is an optional extra)
7. Roof frame extrusions have built in tracks for attachment of roof accessories (Roofrack, tent, awning, etc)
8. Ceiling cross members have built in tracks for attachment of accessories. (table, lights, HiLift jack, etc)
9. Fitted with a cab-slider window as standard, also available with solid glass or solid aluminium
10. Two hatches per side opening upwards

Specifications:

Made from: Big Country extruded aluminium
Aluminium sheeting

Finish: Carpeted inside walls Painted or
polished inside and out

Optional Extras:

- Metallic paint colour coding
- Interior lighting
- Aluminium table and table slide
- Bolt on loadbars or roofrack
- Kitchen box
- Wolfpak slider
- Dust (positive pressure) vents

Also Available in the Cheaper, "Kalahari" Version:

(No carpet, no paint, no windows)



Packaging Size & Weight:

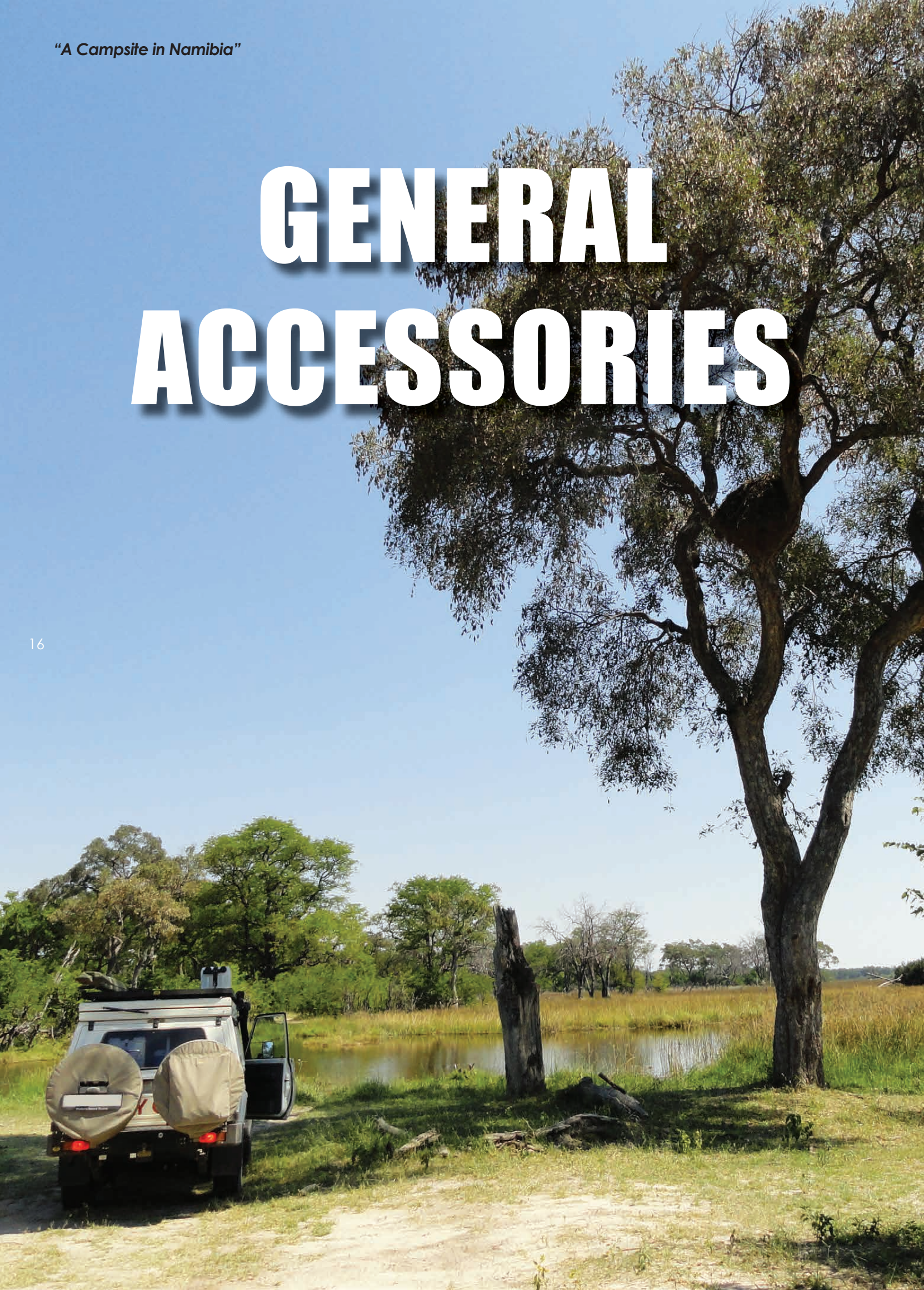
LxWxH: 210x160x55cm
Weight: 90kg

PART NO: ORAA150

"A Campsite in Namibia"

GENERAL ACCESSORIES

16





General Accessories

TRUCK SLIDER



17

Description:

Either a cheaper alternative to a drawer system, or it can be used in conjunction with a drawer system.

Sized to bolt down flat onto the loadbay floor between the wheelarches or simply bolt it down on top of your drawer system.

Locks in the open and closed position. This roller bearing slider is good to carry at least 250kgs.

Also available in size 1000x1040 - suitable for use in SUV

Packaging Size & Weight:

	1500mm	1000mm
LxWxH:	150 x 104 x 7cm	100 x 104 x 7cm
Weight:	40kg	27kg

Specifications:

Material	MildSteel with wooden load surface
Finish	Powdercoated and carpeted

PART NUMBERS:

1500mm	ORAA140
1000mm	ORAA059

"Moody Skies" - Chobe, Botswana

VEHICLE SPECIFIC





Hilux Vigo Floor Safe

Description:

Beneath the rear bench seat are two storage spaces – this product attaches to the LHS one providing a large lockable space..

Easy to fit yourself



19

Specifications:

Material Laser cut Aluminium
Finish Powdercoated

Product suitable for:

Hilux D/Cab (2005-2015)



Packaging Size & Weight:

LxWxH: 45 x 30 x 2cm
Weight: 4kg

PART NO: A-SD-Hilux.01



Hilux/Fortuner Side Light Guards

Description:

A neat st/steel powdercoated cage designed to rivet over the side indicator lenses. Designed to be a theft deterrent as this is a popular place where thieves gain access to the electrical circuitry of the vehicle.

Sold in a pair with black headed rivets



20

Specifications:

Material Stainless Steel
Finish Powdercoated

Product suitable for:

Hilux 2005-2015
Fortuner 2005-2015



Packaging Size & Weight:

LxWxH: 4x2x1 cm
Weight: 0.5kg

PART NO: A-PK-HLX1



Hilux Vigo Dash Tray

Description:

An easy to fit, aluminium, carpeted tray that attaches to the top centre of the dashboard with double sided tape, providing a very useful trinket tray.

Does not interfere with the airbags



21

Specifications:

Material Aluminium
Finish Grey Powdercoated

Product suitable for:

Hilux 2005-2015
Fortuner 2005-2015
LC70 2010+



Packaging Size & Weight:

LxWxH: 28 x 16 x 6cm
Weight: 1kg

PART NO: A-SD-DASHTRAY2



"Swamp Sunset" - Xakanaxa, Botswana





Disclaimer:

All rights reserved. © 2017. Big Country 4x4 consultants, its sponsors, contributors and advertisers disclaim all liability for any loss, damage, injury or expense that might arise from the use of, or reliance upon, the services or intellectual property contained herein.

Please note that the information in this catalogue is subject to change without prior notice and Big Country 4x4 consultants, its sponsors and contributors cannot be held liable for these changes.

Contact Us:

Physical Address:

358 Politician Avenue
Northlands Business Park
37 New Market Street
Northriding

GPS:

S26 01,939; E027 57,494

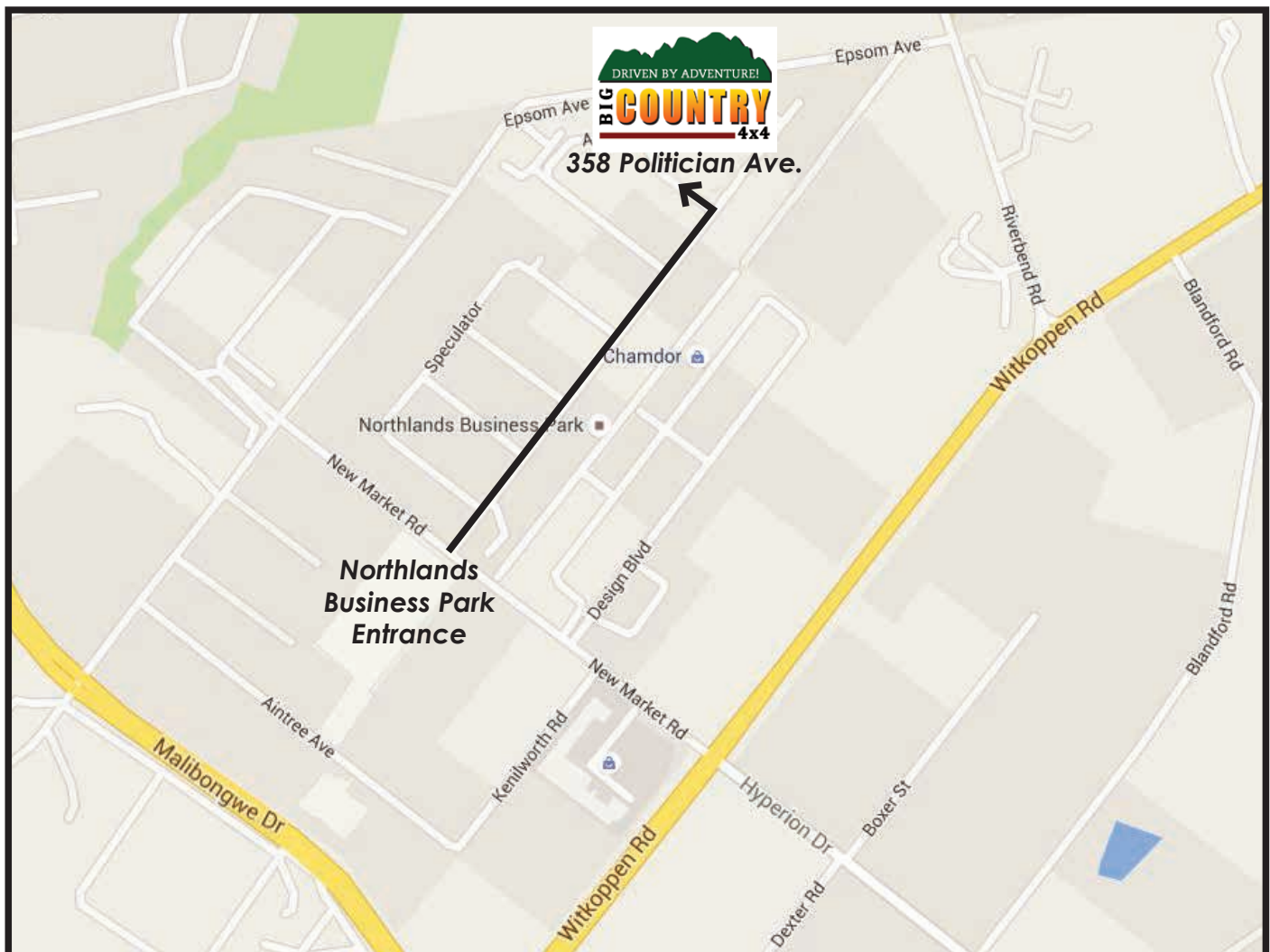
Phone:

+2711 795 9700

Email:

admin@bigcountry.co.za

24





WWW.HHCCOUNTRY.CO.ZA

HHCCOUNTRY 4x4

LAND CRUISER

Pretoria Honda Toyota