



# HILUX VIGO

## PRODUCT CATALOGUE 3<sup>rd</sup> Ed.







Drawer Systems.....	pg 4
Roofracks.....	pg 10
Canopies.....	pg 14
General Accessories.....	pg 18
Vehicle Specific.....	pg 20





# DRAWER SYSTEMS



Big Country 4x4 manufactures two ranges of drawer systems

## ZAMBEZI

Best suited for LDV's



Reason:

- LDV loadbay is generally longer than 1200mm - fully loaded drawers can get heavy
- LDV loadbay can be a dirty place not suited to telescopic sliders

The drawers run on heavy duty sealed roller bearings (30x10) capable of handling heavy loads.

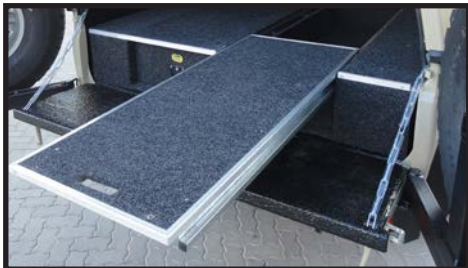
Drawers are good for loads of 200kg per drawer.

Supplied with an integral pull-out sliding top ideal for mounting a fridge.

An easily available plastic "meat tray" works excellently.



LandCruiser 79  
Hilux  
Ford Ranger  
VW Amarok  
Defender 130  
Nissan  
Isuzu  
Triton  
Colt



# Drawer Systems

## SAVUTE

Best suited for SUV's



Reason:

- Shorter loadbays, seldom longer than 1000mm
- Cleaner environment
- A neater finished off product is required

Drawers slide out their full length with telescopic slide

Most models supplied complete with trays and dividers for optimum packing efficiency.

Very easy to add a fridge slider and remove it between trips.

Loadbay still very useable between trips.



LandCruiser 76 SW  
Fortuner  
LandCruiser 80  
LandCruiser 100  
LandCruiser 200  
Prado120  
Prado150  
Disco 3 or 4  
FJ Cruiser  
Pajero CK LWB  
Defender 90/110  
Merc GWagon  
Nissan Patrol  
Jeep Wrangler  
Suzuki Jimny





# ZAMBEZI DRAWER SYSTEMS



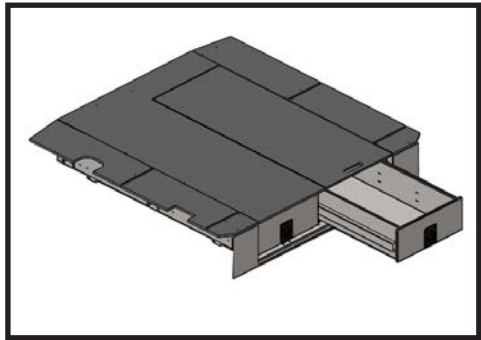
ZAMBEZI

Hilux Vigo  
[2005-2015]  
Twin Drawer



**Features:**

- 1. Designed for use in LDV's
- 2. Made to fit the vehicle loadbay perfectly.
- 3. Roller Bearings provide an extremely rugged design
- 4. Side panels removable to access additional wheelarch packing space.
- 5. Integral top sliding surface—ideal for mounting a fridge
- 6. Lockable.
- 7. Dividers and plastic trays are available.
- 8. Available with "Bed Extensions" for Single or Extra Cab



**Specifications:**

Made from:	Lasercut Galvanised sheet steel
Top Surface:	12mm Superwood, Carpeted
Configuration:	Twin, equal, side by side
Finish:	Carpeted
Sliders:	Roller bearings
Carrying weight:	200kg per drawer

**Sizes:**

Drawer pack width:	435mm
Drawer pack length:	1430mm
Drawer pack depth:	220mm
Overall height:	265mm
Tub width:	1000mm
Tub length:	1500mm

**Packaging Size & Weight:**

LxWxH:	150x101x28 cm
Weight:	85kg

**Part Number: RD-HXDA004**

**Bed Ext for Single Cab: EXT. HLVSC**

**Bed Ext for ExtraCab: EXT.HLVEC**



# Commercial Drawers

## Description:

Commercial drawers are supplied without the integral fridge slider and without the side panels. They can either be finished off with a carpeted wood top or supplied with an aluminium chequer plate top and face panels.

All these drawers have an overall height of 265mm

## Commercial Drawer Sizes:

1300 x 1000, carpeted top	RD/COMA002
1301 x 1000, Aluminium chequer plate top	RD/COMA002A
1500 x 1000, carpeted top	RD/COMA005
1500 x 1000, Aluminium chequer plate top	RD/COMA005A
1700 x 1000, carpeted top	RD/COMA004
1700 x 1000, Aluminium chequer plate top	RD/COMA004A
2000 x 1000, carpeted top	RD/COMA003
2000 x 1000, , Aluminium chequer plate top	RD/COMA003A

## Part Number:

8



8

## Features:

1. Designed for use in LDV's
2. Made to fit between the vehicle wheelarches
3. Roller Bearings provide an extremely rugged design
4. No side panels – these drawers are open down the sides
5. Solid top surface – no slider included
6. Lockable.

## Specifications:

Made from:	Laser-cut Galvanised sheet steel
Top Surface:	12mm Superwood, Carpeted
Configuration:	Twin, equal, side by side
Finish:	Carpeted or Aluminium Chequer plate
Sliders:	Roller bearings
Carrying weight:	200kg per drawer





# ROOFRACKS



## Aluminium Roofracks

# Aluminium Roofracks

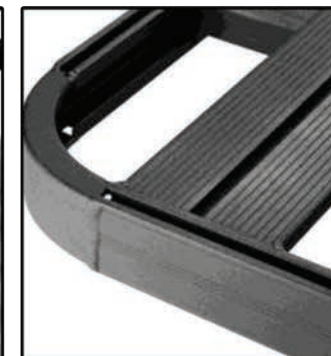
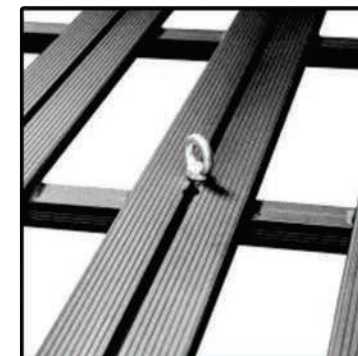
### WHAT MAKES BIG COUNTRY ROOF RACKS THE BEST?

- Longitudinal Floorplanks - negligible wind noise
- Dove-tailed cross members and fully welded for unrivalled strength - rated for 250kg
- Flush on top
- M8 Nut slot in all extrusions
- Dual nut slots in perimeter extrusion for sturdy fitment of accessories
- Fully assembled ready to fit
- Large range of accessory brackets available
- Custom sizes are possible

All roofracks can be supplied with an optional bolt-on toprail



*Big Country DOES NOT use rivnuts to secure a roofrack to the roof of a vehicle.*







# Aluminium Roofracks

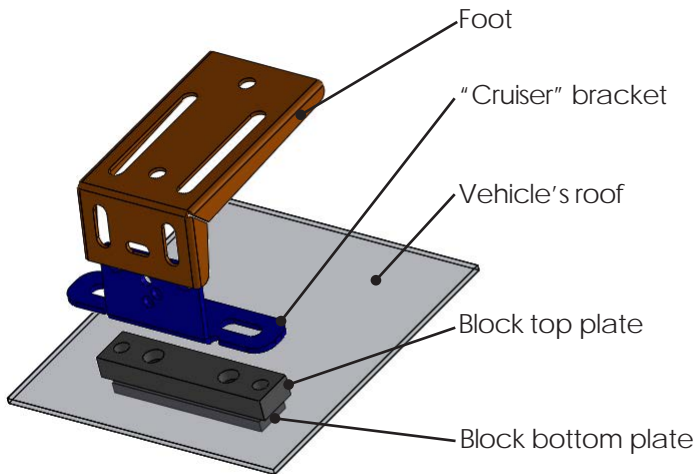
**Specifications:**

Construction:	Fully Welded Aluminium - not just bolted together
Rated for (kg):	250 kg, subject to vehicle load capability
Orientation:	Longitudinal Floorplanks
Configuration:	Assembled ready to fit
Mounting Type:	Block Mount
Finish:	Black Powder-coated
Number of feet:	2 x height adjustable steel feet per side

**Sizes:**

	Double Cab	Extra Cab	Single Cab
Length (mm):	1400	1200	800
Width (mm):	1225	1225	1225
Toprail Options:	Full	Full	Full

# Hilux Vigo [2005-2015]



Typical Block Mount Layout



**Packaging Size & Weight:**

	Double Cab	Extra Cab	Single Cab
LxWxH:	140x123x6cm	120x123x6cm	120x80x6cm
Weight:	20kg	17kg	15kg

**PART NUMBERS:**

Double Cab:	A-RR-HLX-V2
Extra Cab:	A-RR-HLX-EC
Single Cab:	A-RR-HLX-V1



# Aluminium Roofracks

**Specifications:**

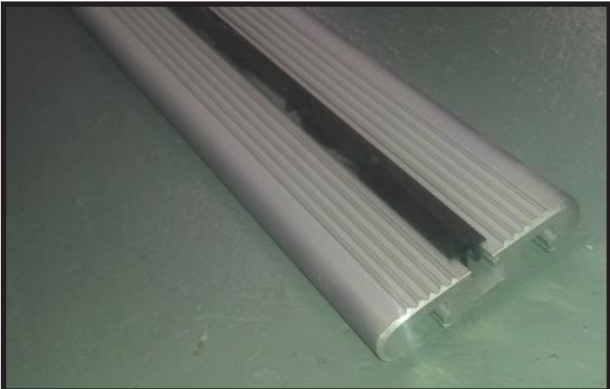
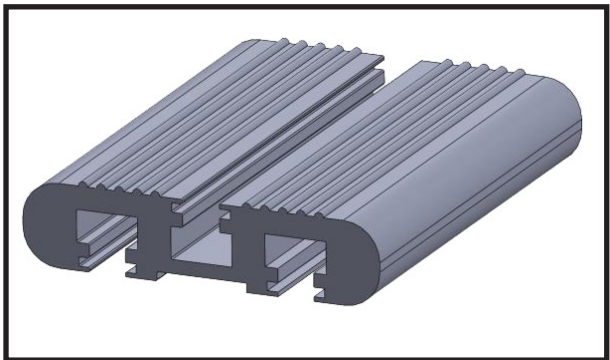
1. Heavy Duty Aluminium extrusion (2.4kg / meter, with section thicknesses of up to 12mm)
2. Aerodynamically shaped for minimal wind noise.
3. Fitted with rubber bolt slot inserts
4. Bolt slots suitable for standard M8 fasteners
5. A cheaper alternative to a full roofrack
6. Ideal for mounting a rooftop tent or Ostrich wing awning
7. Available for all vehicles in the Big Country roofrack range
8. Supplied in a polished finish with rubber end caps
9. Generally supplied in pairs

**Vehicle:**

- Hilux Vigo 2005-2015

**Part Numbers:**

LB-HV1250/T





# CANOPIES



## Aluminium Canopies

Big Country 4x4 manufactures two ranges of Aluminium Canopies

### ZAMBEZI



- Standard with a front can-slider window and a large rear hatch window for excellent rear vision
- Carpeted interior side walls
- Colour coded to a "flat colour" at no extra charge
- Options on rear hatch design
- Options on side hatch finish
- Options on side hatch design (solid, glass, sliders)

### KALAHARI



- Polished finish (no paint)
- No Carpet
- No windows
- No design options

(Just a strong no-nonsense canopy that does the job)

### COMMON FEATURES:

- Made from Big Country aluminium extrusions specially designed for strength, weight and versatility
- Fully welded construction with cross bracing to allow for substantial roof loading
- Bolt slots on the ceiling cross members great for attaching accessories
- Built-in bolt slots on the top of the roof to bolt on an awning, roofrack or loadbars (no drilling).
- Fully lockable and available with a number of optional extras:

- |  |                     |
|--|---------------------|
| • Bolt on roofrack or loadbars               | • Wolfpak slider    |
| • Slide-in Aluminium table (ceiling mounted) | • Internal lighting |
| • Kitchen Box                                | • Dust vents        |

Hilux 2005-2015  
Hilux 2016+  
LandCruiser 75  
LandCruiser 79  
Ford / Mazda  
2102+ Ford /  
Mazda '07-'11  
Defender 110  
Defender 130  
Nissan Navara  
Nissan NP300  
Isuzu DTeque  
Isuzu 2005 DMax  
Mitsubishi Colt  
VW Amarok  
Mahindra







ZAMBEZI  
Aluminium Canopies

# Hilux Vigo D & Extra Cab [2005-2015]

## Features:

1. Light weight but super strong!
2. Colour coded to any single flat colour at no extra charge
3. Carpeted interior side walls
4. Options on side hatch finish (painted or polished)
5. Options on side hatch design (solid aluminium, glass insert or glass sliders)
6. Options on rear hatch design (full glass is standard on this vehicle, or alum with glass insert (as shown) is an optional extra)
7. Roof frame extrusions have built in tracks for attachment of roof accessories (Roofrack, tent, awning, etc)
8. Ceiling cross members have built in tracks for attachment of accessories. (table, lights, HiLift jack, etc)
9. Fitted with a cab-slider window as standard, also available with solid glass or solid aluminium
10. One hatch per side opening upwards

## Specifications:

Made from: Big Country extruded aluminium  
Aluminium sheeting  
Finish: Carpeted inside walls Painted or  
polished inside and out

## Optional Extras:

- Metallic paint colour coding
- Interior lighting
- Aluminium table and table slide
- Bolt on loadbars or roofrack
- Kitchen box
- Wolfpak slider
- Dust (positive pressure) vents

Also Available in the Cheaper, "Kalahari" Version:

(No carpet, no paint, no windows)



## Packaging Size & Weight:

	Double Cab	Extra Cab
LxWxH:	160x160x55cm	185x160x55cm
Weight:	70kg	85kg

## PART NUMBERS:

Double Cab: A-CPY-HLVD

Extra Cab: ORAA160



ZAMBEZI  
Aluminium Canopies

# Hilux Vigo S Cab [2005-2015]

## Features:

1. Light weight but super strong!
2. Colour coded to any single flat colour at no extra charge
3. Carpeted interior side walls
4. Options on side hatch finish (painted or polished)
5. Options on side hatch design (solid aluminium, glass insert or glass sliders)
6. Options on rear hatch design (full glass is standard on this vehicle, or alum with glass insert (as shown) is an optional extra)
7. Roof frame extrusions have built in tracks for attachment of roof accessories (Roofrack, tent, awning, etc)
8. Ceiling cross members have built in tracks for attachment of accessories. (table, lights, HiLift jack, etc)
9. Fitted with a cab-slider window as standard, also available with solid glass or solid aluminium
10. Two hatches per side opening upwards

## Specifications:

Made from: Big Country extruded aluminium  
Aluminium sheeting  
Finish: Carpeted inside walls Painted or  
polished inside and out

## Optional Extras:

- Metallic paint colour coding
- Interior lighting
- Aluminium table and table slide
- Bolt on loadbars or roofrack
- Kitchen box
- Wolfpak slider
- Dust (positive pressure) vents

Also Available in the Cheaper, "Kalahari" Version:

(No carpet, no paint, no windows)



## Packaging Size & Weight:

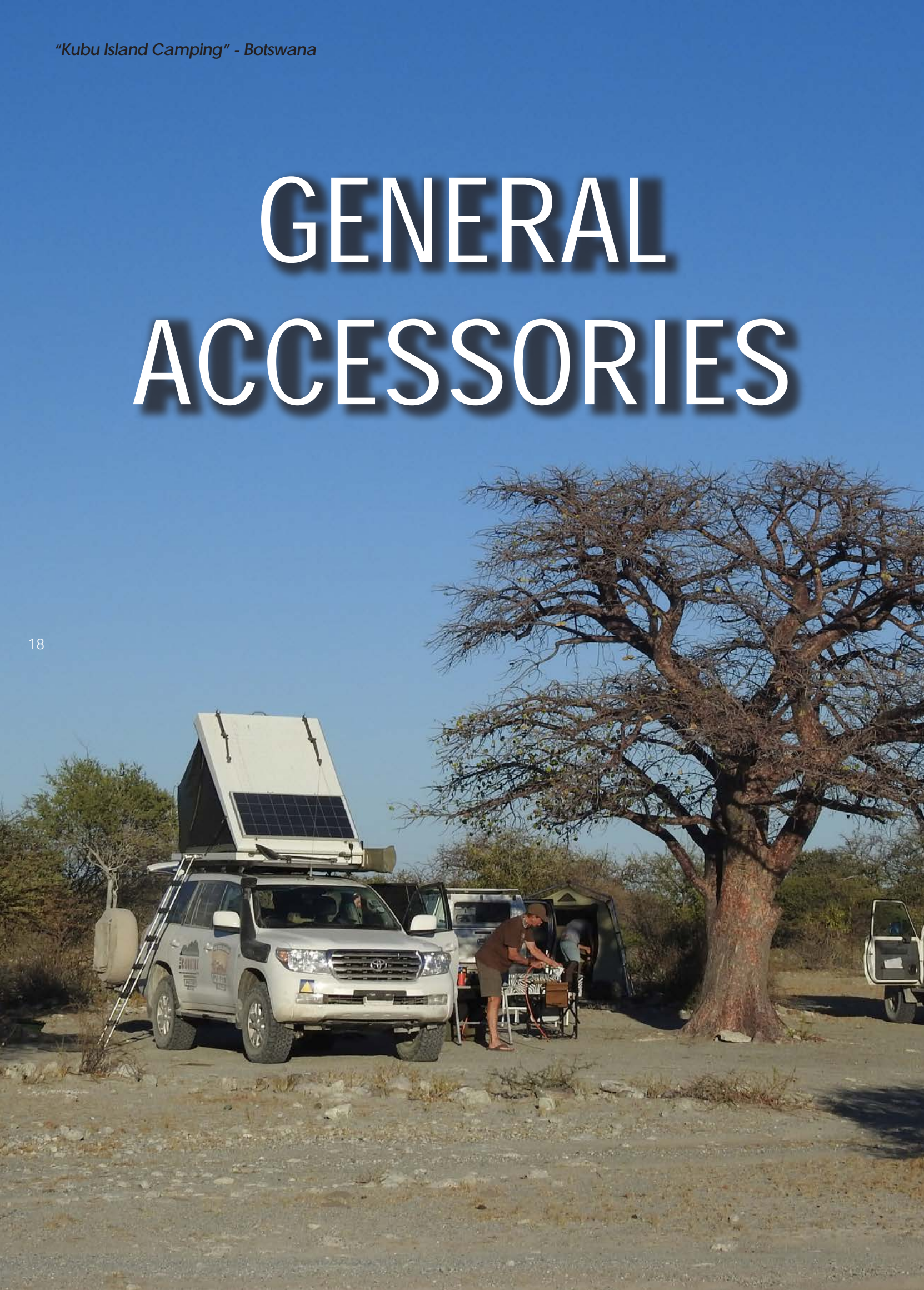
LxWxH: 210x160x55cm  
Weight: 90kg

PART NO: ORAA150



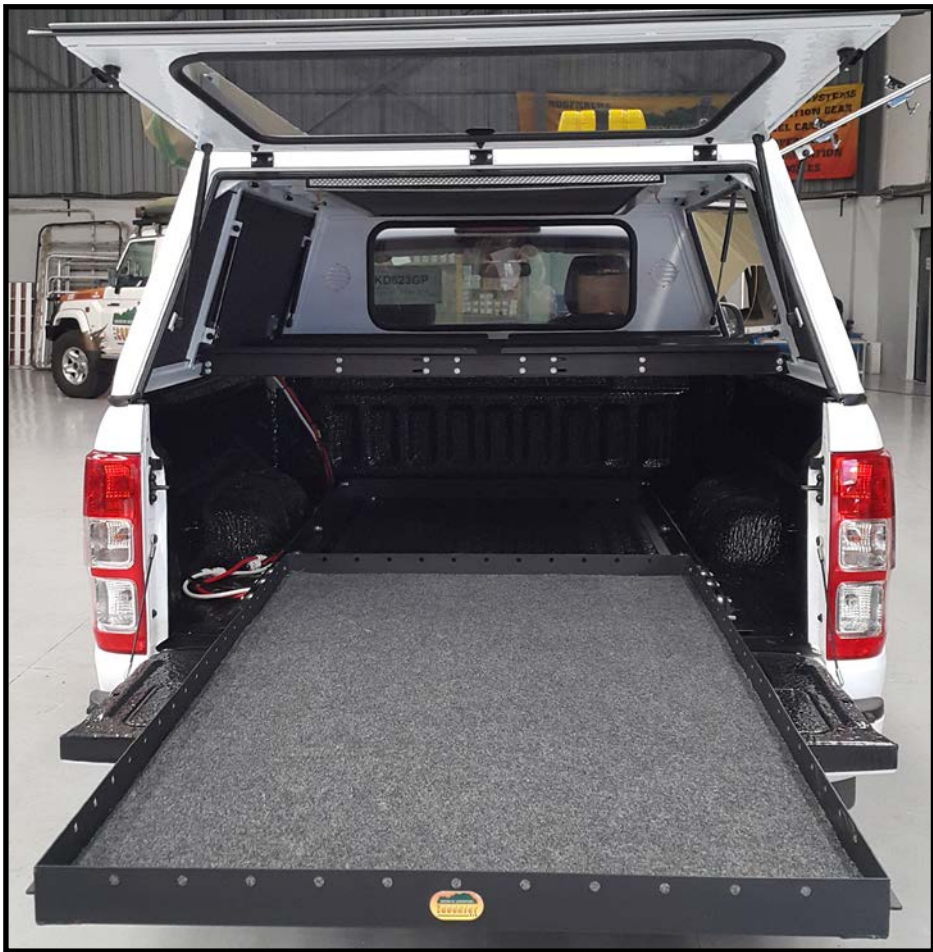
# GENERAL ACCESSORIES

18



# General Accessories

## TRUCK SLIDER



19

### Description:

Either a cheaper alternative to a drawer system, or it can be used in conjunction with a drawer system.

Sized to bolt down flat onto the loadbay floor between the wheelarches or simply bolt it down on top of your drawer system.

Locks in the open and closed position. This roller bearing slider is good to carry at least 250kgs.

Also available in size 1000x1040 - suitable for use in SUV

### Packaging Size & Weight:

	1500mm	1000mm
LxWxH:	150 x 104 x 7cm	100 x 104 x 7cm
Weight:	40kg	27kg

### Specifications:

Material	MildSteel with wooden load surface
Finish	Powdercoated and carpeted

### PART NUMBERS:

1500mm	ORAA140
1000mm	ORAA059



"Tent Views into the Delta" - Okavango, Botswana

# VEHICLE SPECIFIC







# Hilux Floor Safe

## Description:

Beneath the rear bench seat are two storage spaces – this product attaches to the LHS one providing a large lockable space. Suitable for Hilux Vigo and Hilux Revo.

Easy to fit yourself



## Specifications:

Material: Laser cut Aluminium  
Finish: Powdercoated

## Product suitable for:

Hilux D/Cab (2005-2015) (Vigo)  
Hilux D/Cab (2015+) (Revo)



## Packaging Size & Weight:

LxWxH: 45 x 30 x 2cm  
Weight: 4kg

**PART NO: A-SD-Hilux.01**



# Hilux/Fortuner Side Light Guards

## Description:

A neat st/steel powdercoated cage designed to rivet over the side indicator lenses. Designed to be a theft deterrent as this is a popular place where thieves gain access to the electrical circuitry of the vehicle.

Sold in a pair with black headed rivets



## Specifications:

Material: Stainless Steel  
Finish: Powdercoated

## Product suitable for:

Hilux 2005-2015  
Fortuner 2005-2015



## Packaging Size & Weight:

LxWxH: 4x2x1 cm  
Weight: 0.5kg

**PART NO: A-PK-HLX1**





# Hilux Vigo Dash Tray

## Description:

An easy to fit, aluminium, carpeted tray that attaches to the top centre of the dashboard with double sided tape, providing a very useful trinket tray.

Does not interfere with the airbags



## Specifications:

Material Aluminium  
Finish Grey Powdercoated

## Packaging Size & Weight:

LxWxH: 28 x 16 x 6cm  
Weight: 1kg

## Product suitable for:

Hilux 2005-2015  
Fortuner 2005-2015  
LC70 2010+



**PART NO: A-SD-DASHTRAY2**







**Disclaimer:**

All rights reserved. © 2017. Big Country 4x4 consultants, its sponsors, contributors and advertisers disclaim all liability for any loss, damage, injury or expense that might arise from the use of, or reliance upon, the services or intellectual property contained herein.

Please note that the information in this catalogue is subject to change without prior notice and Big Country 4x4 consultants, its sponsors and contributors cannot be held liable for these changes.

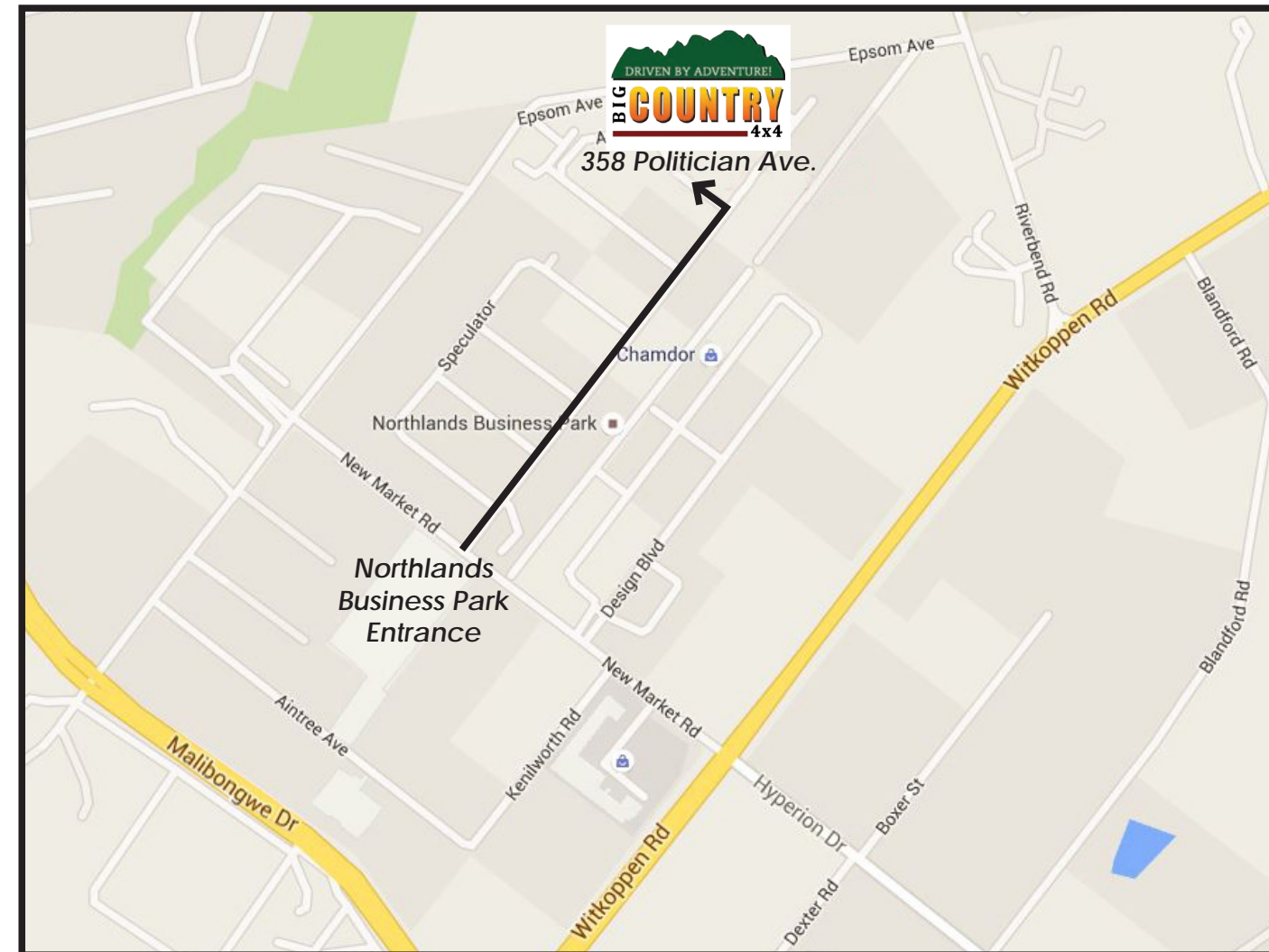
**Contact Us:**

**Physical Address:**  
358 Politician Avenue  
Northlands Business Park  
37 New Market Street  
Northriding

**GPS:**  
S26 01,939; E027 57,494

**Phone:**  
+2711 795 9700

**Email:**  
admin@bigcountry.co.za



"A Black Heron Fishing" - Botswana





